

YUMA, ARIZONA

# HI-TACAN Z RWY 21R

TACAN NYL Chan <b>84</b>	APCH CRS <b>208°</b>	Rwy Idg <b>13,300</b> TDZE <b>193</b> Arprt Elev <b>213</b>
-----------------------------	-------------------------	---

[USN]

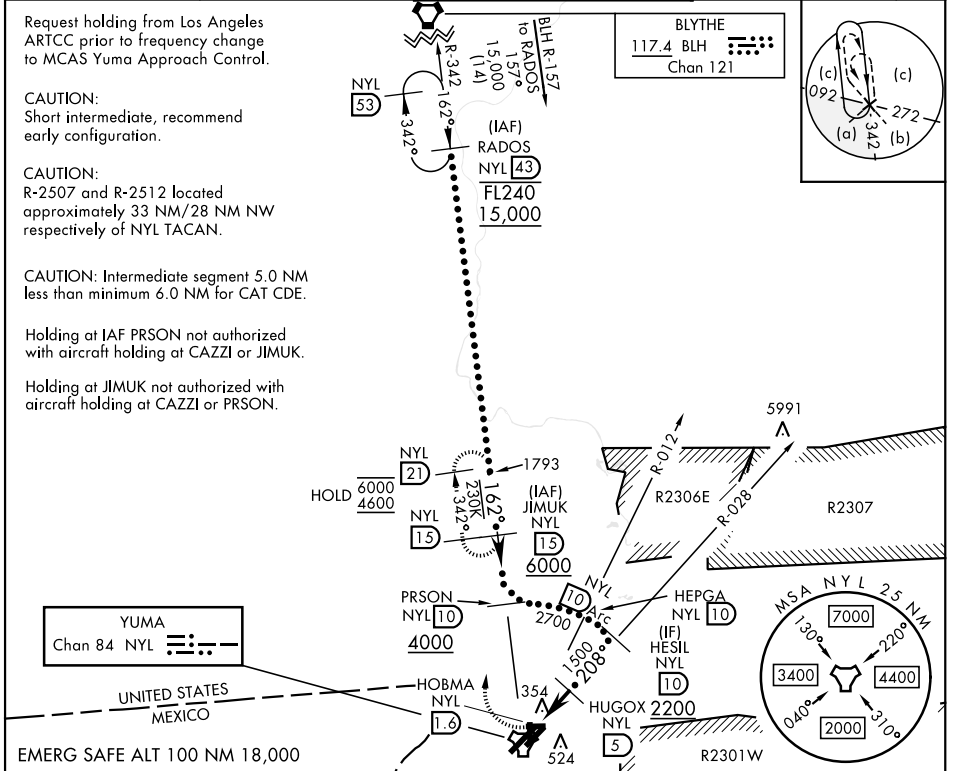
YUMA MCAS/YUMA INTL (KNYL)

\* When ALS inop, increase vis to 1 1/4 miles.

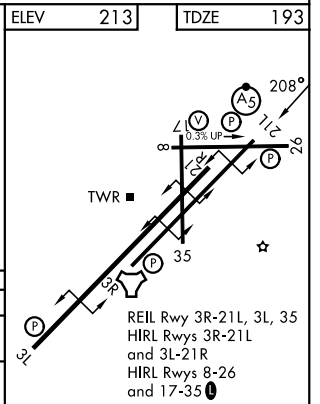
MALS R (A5)

MISSED APPROACH: Climb to 1000 then climbing right turn to 4600 on hdg 012° and NYL TACAN R-342 to JIMUK and hold, continue climb-in-hold to 4600.

ATIS <b>118.8 273.5</b>	APP CON <b>124.7 371.975</b>	TOWER <b>119.3 (CTAF) 0 377.075</b>	GND CON <b>121.9 314.0</b>	ASR/ PAR
----------------------------	---------------------------------	--	-------------------------------	----------



1000	4600	NYL R-342	JIMUK NYL 15	RADOS NYL 43
↑	hdg 012°			
NYL TACAN	HOBMA NYL 1.9	HUGOX NYL 5	HESIL NYL 10	HEPGA NYL 10
	NYL 2.4			
	3.12°			
	TCH 50			
	3.4 NM			
CATEGORY	C	D	E	
S-21R*	620-3/4	427	(500-3/4)	
CIRCLING	860-1 3/4 647 (700-1 3/4)	860-2 647 (700-2)	860-2 1/4 647 (700-2 1/4)	



SW-4, 09 JUL 2026 to 06 AUG 2026

SW-4, 09 JUL 2026 to 06 AUG 2026

YUMA, ARIZONA  
Amdt 7 22JAN26

32°39'N-114°36'W

YUMA MCAS/YUMA INTL (KNYL)

# HI-TACAN Z RWY 21R