

YUMA, ARIZONA

ILS or LOC RWY 21R

LOC I-YUM 108.3	APCH CRS 211°	Rwy Ldg 21L 9239 21R 13,300	TDZE 21L 208 21R 193	Arpt Elev 213
---------------------------	-------------------------	---	--	-------------------------

[USN] YUMA MCAS/YUMA INTL (KNYL)

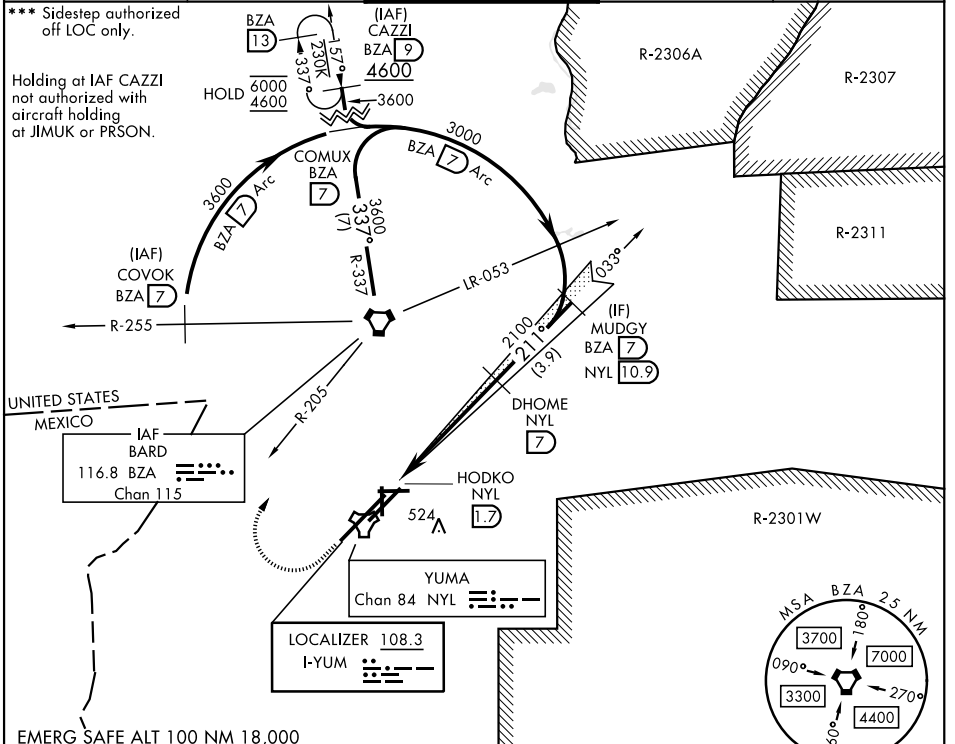
VOR, DME required

* When ALS inop, increase vis to ¾ mile.
 ** When ALS inop, increase CAT AB vis to 1 mile, CAT CD vis to 1½ miles.

MALS R (AS)

MISSED APPROACH: Climb to 900, then climbing right turn to 4600 heading 355° and intercept BZA VORTAC R-205 direct BZA. Then outbound via BZA R-337 to CAZZI and hold, continue climb-in-hold to 4600.

ATIS 118.8 273.5	APP CON 124.7 371.975	TOWER 119.3 (CTAF) 0 377.075	GND CON 121.9 314.0	ASR/PAR
----------------------------	---------------------------------	--	-------------------------------	---------



EMERG SAFE ALT 100 NM 18,000

900	4600	BZA
↑	↘	⬇
	BZA R-205	⬇

VGSI and ILS glidepath not coincident (VGSI Angle 3.00/TCH 50).

MUDGY BZA 7, NYL 10.9

DHOME NYL 7

HODKO NYL 1.7, NYL 2.3

ELEV 213 D TDZE 21L 208
TDZE 21R 193

CATEGORY	A	B	C	D
S-ILS 21R *	393-½		200	(200-½)
S-LOC 21R **	600-½	407 (400-½)	600-¾	407 (400-¾)
SIDESTEP 21L ***	600-½	392 (400-½)	600-2	600-2½
			392 (400-2)	392 (400-2½)
CIRCLING	680-1	467 (500-1)	860-1¾	860-2
			647 (700-1¾)	647 (700-2)

GS 3.00° TCH 54

TWR

REIL Rwy 3L, 3R, 21L, 35
HIRL Rwy 3R-21L, 3L-21R
HIRL Rwy 8-26, 17-35

YUMA, ARIZONA 32° 39' N - 114° 36' W YUMA MCAS/YUMA INTL (KNYL)

Amtd 7 22JAN26

ILS or LOC RWY 21R

SW-4, 09 JUL 2026 to 06 AUG 2026

SW-4, 09 JUL 2026 to 06 AUG 2026