

# TACAN Y RWY 21R

YUMA MCAS/YUMA INTL (KNYL)

TACAN NYL Chan <b>84</b>	APCH CRS <b>208°</b>	Rwy Ldg <b>13,300</b> TDZE <b>193</b> Arprt Elev <b>213</b>
-----------------------------	-------------------------	---

[USN]

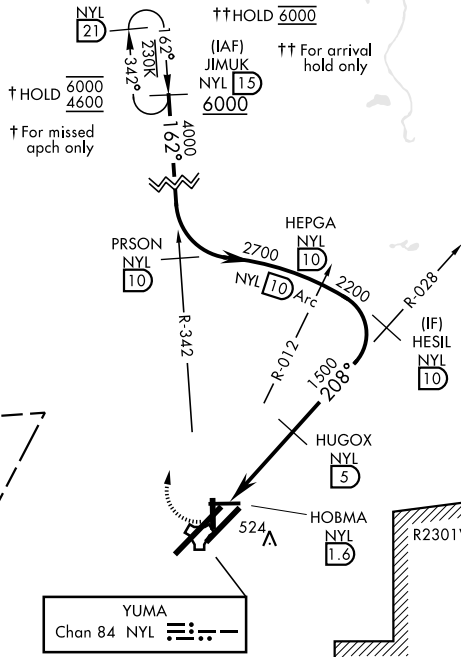
▼ \* When ALS inop, increase CAT AB vis to 1 mile, CAT CD vis to 1/4 miles.



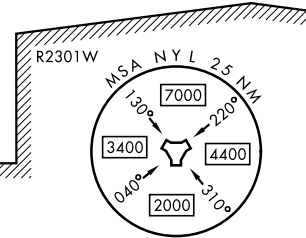
MISSED APPROACH: Climb to 1000, then climbing right turn to 4600 on hdg 012° and NYL TACAN R-342 to JIMUK and hold, continue climb-in-hold to 4600.

ATIS <b>118.8 273.5</b>	APP CON <b>124.7 371.975</b>	TOWER <b>119.3 (CTAF) 0 377.075</b>	GND CON <b>121.9 314.0</b>	ASR/PAR
----------------------------	---------------------------------	--	-------------------------------	---------

CAUTION:  
R-2306E located  
14.9 NM NE of NYL TACAN.  
CAUTION: Intermediate  
segment 5 NM less than  
minimum 6 NM for CAT CDE.

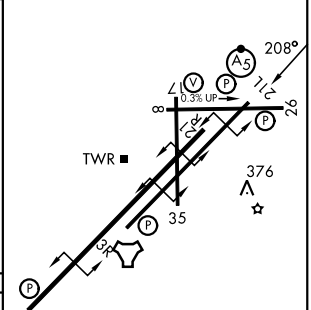
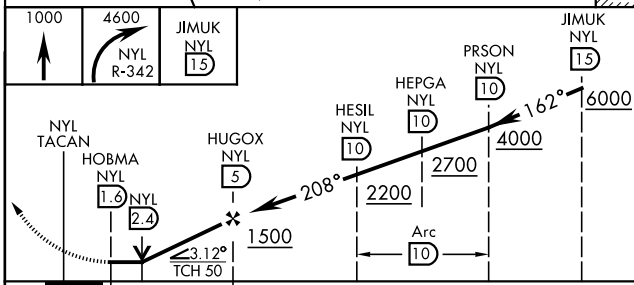


YUMA  
Chan 84 NYL



EMERG SAFE ALT 100 NM 18,000

ELEV	213	TDZE	193
------	-----	------	-----



CATEGORY	A	B	C	D
S-21R*	620-1/2	427 (500-1/2)	620-3/4	427 (500-3/4)
CIRCLING	680-1 467 (500-1)	680-1 467 (500-1)	860-1 1/4 647 (700-1 1/4)	860-2 647 (700-2)

REIL Rwy's 3L, 3R, 21L, 35  
HIRL Rwy's 3R-21L, 3L-21R  
HIRL Rwy's 8-26, 17-35

# TACAN Y RWY 21R

SW-4, 09 JUL 2026 to 06 AUG 2026

SW-4, 09 JUL 2026 to 06 AUG 2026