

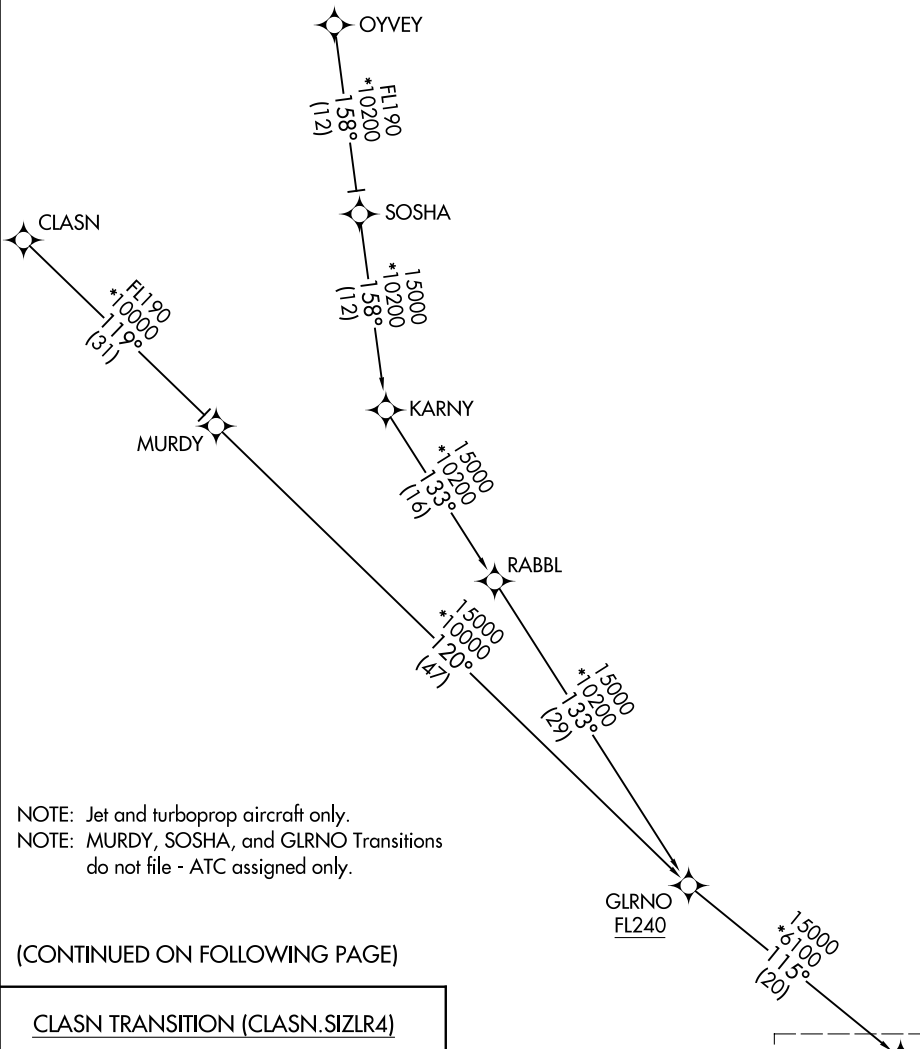
SIZL FOUR ARRIVAL (RNAV) Transition Routes

PALM SPRINGS, CALIFORNIA

RNAV 1 - DME/DME/IRU or GPS.

RADAR required.

SOCAL APP CON
 134.0 278.3
 PSP ATIS
 124.65
 PALM SPRINGS TOWER*
 119.7 377.05



NOTE: Jet and turboprop aircraft only.
 NOTE: MURDY, SOSHA, and GLRNO Transitions do not file - ATC assigned only.

(CONTINUED ON FOLLOWING PAGE)

- CLASN TRANSITION (CLASN.SIZL4)
- GLRNO TRANSITION (GLRNO.SIZL4)
- MURDY TRANSITION (MURDY.SIZL4)
- OYVEY TRANSITION (OYVEY.SIZL4)
- SOSHA TRANSITION (SOSHA.SIZL4)

NOTE: Chart not to scale.

See following page
 for arrival routes

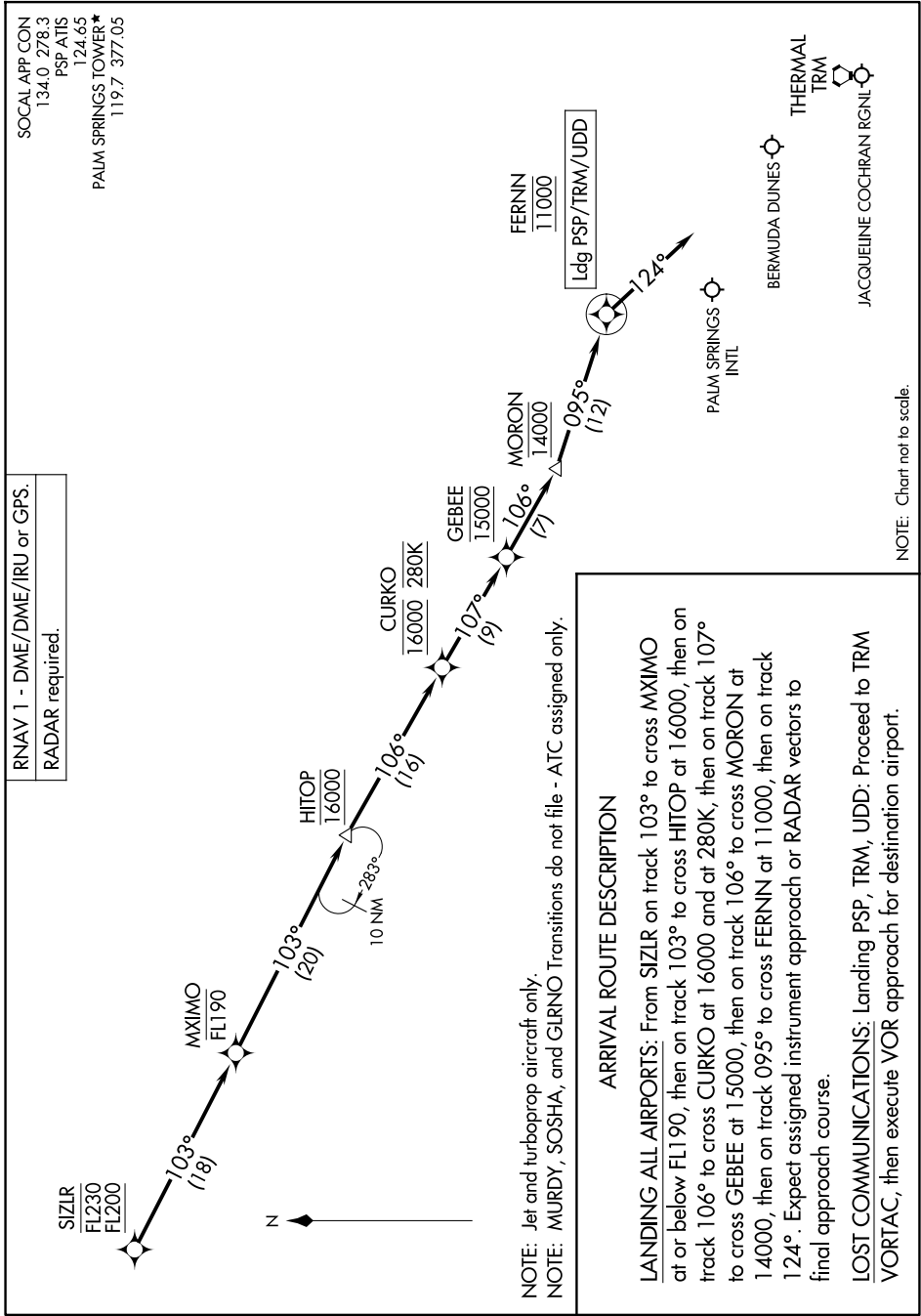
SW-3, 09 JUL 2026 to 06 AUG 2026

SW-3, 09 JUL 2026 to 06 AUG 2026

SIZLR FOUR ARRIVAL (RNAV) Arrival Routes

PALM SPRINGS, CALIFORNIA

9200 GVA 2026 to 06 AUG 2026 10:00:00 MS



SOCAL APP CON
134.0 278.3
PSP ATIS
124.65
PALM SPRINGS TOWER*
119.7 377.05

RNAV 1 - DME/DME/IRU or GPS.
RADAR required.

THERMAL TRM

BERMUDA DUNES

PALM SPRINGS INTL

JACQUELINE COCHRAN RGNI

NOTE: Chart not to scale.