

LOC I-SBD 109.3	APP CRS 057°	Rwy Ldg 10000 TDZE 1103 Apt Elev 1159
---------------------------	------------------------	--

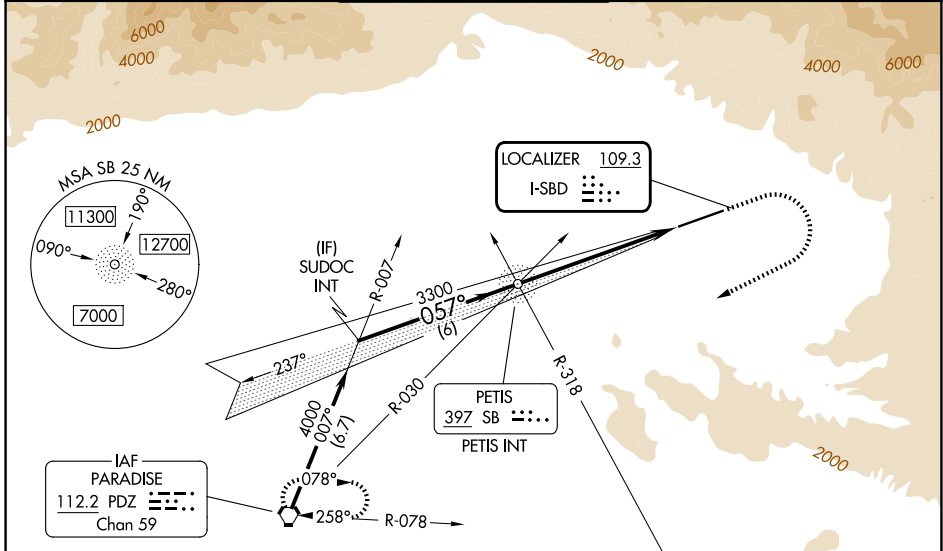
ILS or LOC Z RWY 6

SAN BERNARDINO INTL (SBD)

⚠ Circling NA northwest of Rwy 6-24. When local altimeter setting not received, use Ontario altimeter setting and increase DA to 1426 feet and all visibilities ¼ SM; increase all MDA 80 feet and S-LOC Cats C/D and Circling Cat C visibility ¼ SM.

MISSED APPROACH: Climb to 2000 then climbing right turn to 6000 direct PDZ VORTAC and hold, continue climb-in-hold to 6000.
* Missed approach requires minimum climb of 340 feet per NM to 4000; if unable to meet climb gradient, see LOC Y RWY 6.

D-ATIS 124.175	SOCAL APP CON 127.0 318.2	SAN BERNARDINO TOWER * 119.45 (CTAF) 0	GND CON 121.8	UNICOM 122.975
--------------------------	-------------------------------------	--	-------------------------	--------------------------



Procedure NA for arrival on PDZ VORTAC
airway radials 012 CW 030.

ELEV 1159	D	TDZE 1103
-----------	----------	-----------

HIRL Rwy 6-24 0	
REIL Rws 6 and 24 0	
FAF to MAP 6.1 NM	
Knots	60 90 120 150 180
Min:Sec	6:06 4:04 3:03 2:26 2:02

SUDOC INT SB NDB PETIS INT 2000 6000 PDZ 4000 057° 3118 3300 GS 3.00° TCH 51 6 NM 6.1 NM	CATEGORY A B C D			
	S-ILS 6* 1353-¾ 250 (200-¾)			
S-LOC 6* 1740-1 637 (600-1)		1740-1¾ 637 (600-1¾)		
CIRCLING 1740-1 581 (600-1)		1760-1¾ 2640-3 601 (700-1¾) 1481 (1500-3)		

SW-3, 09 JUL 2026 to 06 AUG 2026

SW-3, 09 JUL 2026 to 06 AUG 2026