

LOC I-SBD <b>109.3</b>	APP CRS <b>057°</b>	Rwy Ldg TDZE <b>1103</b> Apt Elev <b>1159</b>
---------------------------	------------------------	---

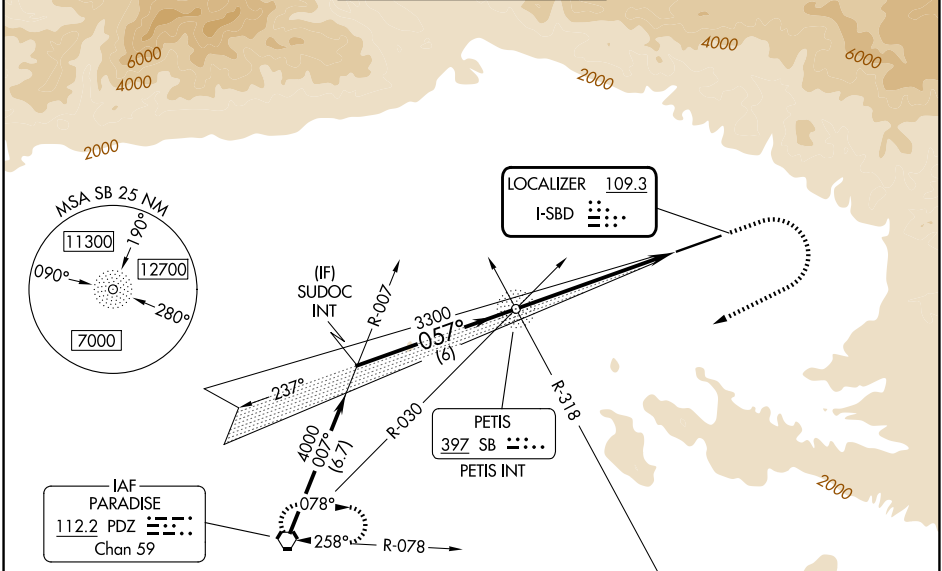
# LOC Y RWY 6

SAN BERNARDINO INTL (SBD)

**⚠** Circling NA northwest of Rwy 6-24. When local altimeter not received, use Ontario altimeter setting and increase all MDA 80 feet; increase S-LOC Cat B and Circling Cat B visibility ¼ SM.

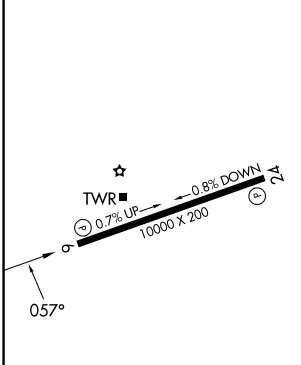
**MISSED APPROACH:** Climb to 2700 then climbing right turn to 6000 direct PDZ VORTAC and hold, continue climb-in-hold to 6000.

D-ATIS <b>124.175</b>	SOCAL APP CON <b>127.0 318.2</b>	SAN BERNARDINO TOWER ★ <b>119.45</b> (CTAF) <b>0</b>	GND CON <b>121.8</b>	UNICOM <b>122.975</b>
--------------------------	-------------------------------------	---	-------------------------	--------------------------

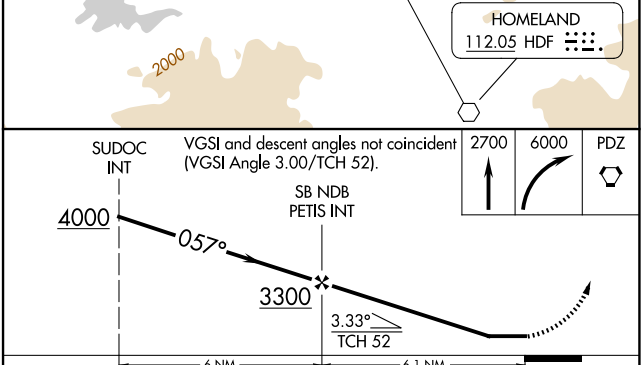


Procedure NA for arrival on PDZ VORTAC  
airway radials 012 CW 030.

ELEV 1159	<b>D</b>	TDZE 1103
-----------	----------	-----------



HIRL Rwy 6-24 <b>0</b>	REIL Rwy 6 and 24 <b>0</b>
FAF to MAP 6.1 NM	
Knots	60 90 120 150 180
Min:Sec	6:06 4:04 3:03 2:26 2:02



CATEGORY	A	B	C	D
S-6	2020-1¼ 917 (900-1¼)		2060-3 957 (1000-3)	
CIRCLING	2020-1¼ 861 (900-1¼)		2060-3 901 (1000-3)	2640-3 1481 (1500-3)

SW-3, 09 JUL 2026 to 06 AUG 2026

SW-3, 09 JUL 2026 to 06 AUG 2026