

APP CRS 057°	Rwy Ldg 10000
	TDZE 1103
	Apt Elev 1159

RNAV (RNP) X RWY 6

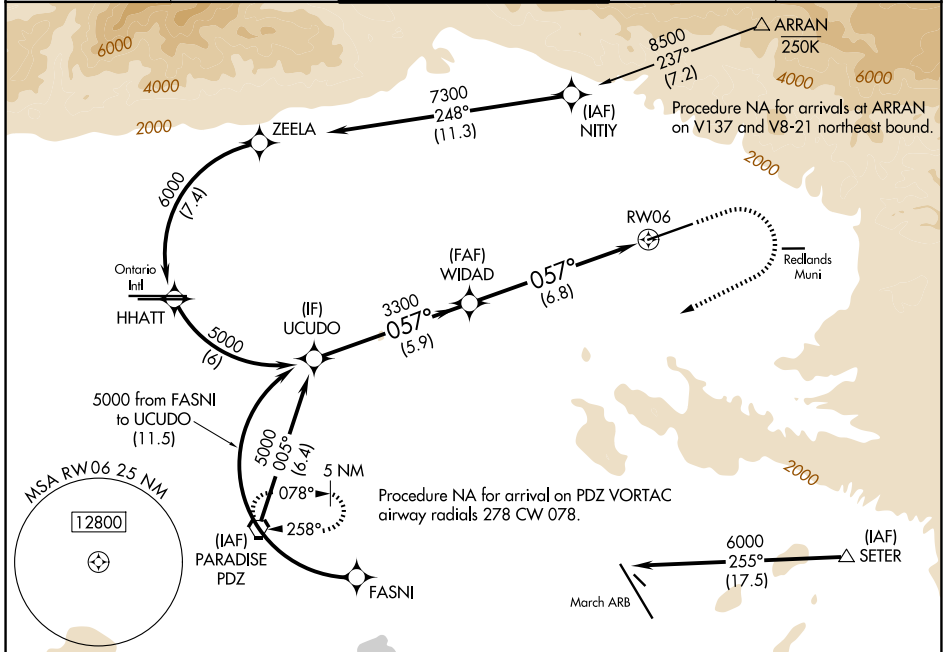
SAN BERNARDINO INTL (SBD)

RNP AR APCH-GPS. Authorization required. From NITTY or SETER: RF.

MISSED APPROACH: Climb to 2000 then climbing right turn to 6000 direct PDZ VORTAC and hold.

*Missed approach requires minimum climb of 350 feet per NM to 4000; if unable to meet climb gradient, see RNAV (GPS) Y RWY 6.

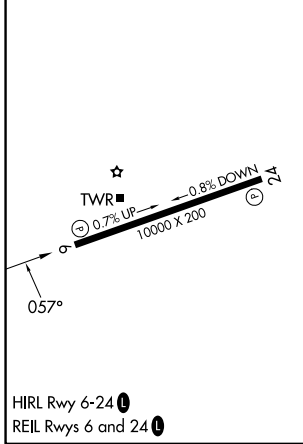
D-ATIS 124.175	SOCAL APP CON 127.0 318.2	SAN BERNARDINO TOWER * 119.45 (CTAF) 0	GND CON 121.8	UNICOM 122.975
--------------------------	-------------------------------------	---	-------------------------	--------------------------



SW-3, 09 JUL 2026 to 06 AUG 2026

SW-3, 09 JUL 2026 to 06 AUG 2026

ELEV 1159	D	TDZE 1103
-----------	----------	-----------



	UCUDO	WIDAD	2000	6000	PDZ
	5000	3300	↑	↷	◡
	GP 3.00° TCH 51				
	5.9 NM		6.8 NM		
CATEGORY	A	B	C	D	
RNP 0.15 DA*	1353/40		250 (200-¾)		
RNP 0.30 DA*	1403/45		300 (300-⅞)		

AUTHORIZATION REQUIRED