

APP CRS	Rwy Ldg	10000
057°	TDZE	1103
	Apt Elev	1159

RNAV (GPS) Y RWY 6

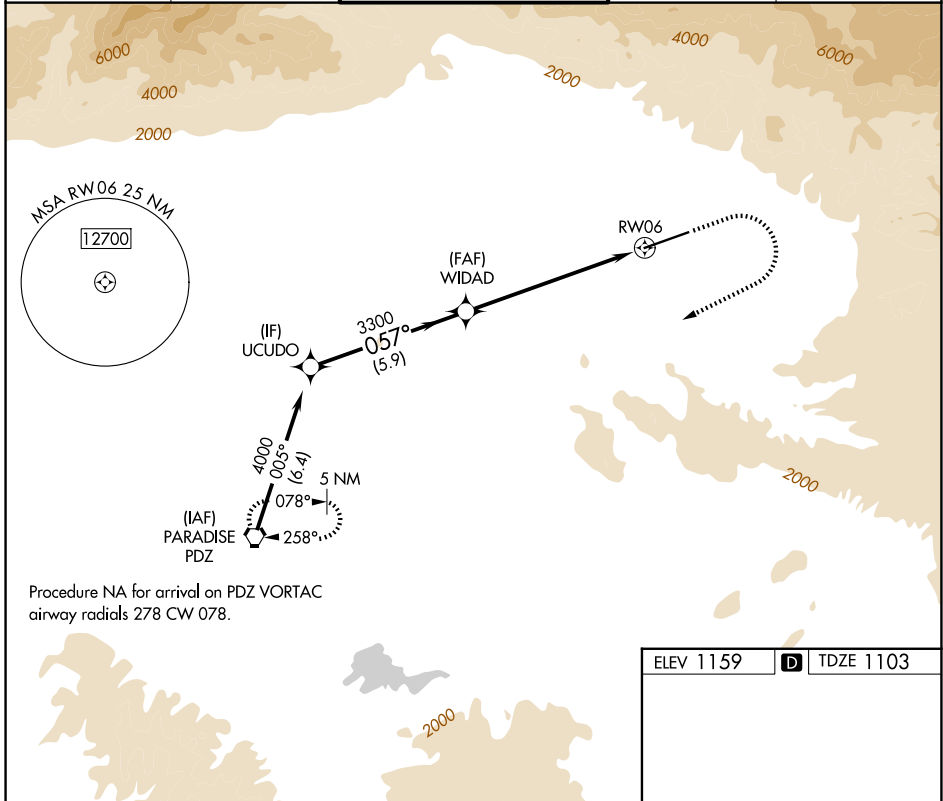
SAN BERNARDINO INTL (SBD)

RNP APCH

▼ Circling NA northwest of Rwy 6-24. When local altimeter setting not received, use Ontario altimeter setting and increase all MDA 80 feet.

MISSED APPROACH: Climb to 2800 then climbing right turn to 6000 direct PDZ VORTAC and hold, continue climb-in-hold to 6000.

D-ATIS 124.175	SOCAL APP CON 127.0 318.2	SAN BERNARDINO TOWER ★ 119.45 (CTAF) 0	GND CON 121.8	UNICOM 122.975
--------------------------	-------------------------------------	--	-------------------------	--------------------------



Procedure NA for arrival on PDZ VORTAC
airway radials 278 CW 078.

ELEV 1159 **D** TDZE 1103

	UCUDO	WIDAD	RWY 6	
	4000	3300	2800	6000
	057°	3.00° TCH 51	↑	↷
	5.9 NM	2.7 NM	4.1 NM to RWY 6	PDZ
CATEGORY	A	B	C	D
RNAV MDA	2460-1¼ 1357 (1400-1¼)	2460-1½ 1357 (1400-1½)	2460-3 1357 (1400-3)	2640-3 1481 (1500-3)
CIRCLING	2460-1¼ 1301 (1400-1¼)	2460-1½ 1301 (1400-1½)	2460-3 1301 (1400-3)	2640-3 1481 (1500-3)

SW-3, 09 JUL 2026 to 06 AUG 2026

SW-3, 09 JUL 2026 to 06 AUG 2026