

WAAS CH 66041 W06A	APP CRS 057°	Rwy Ldg 10000 TDZE 1103 Apt Elev 1159
--	------------------------	--

RNAV (GPS) Z RWY 6

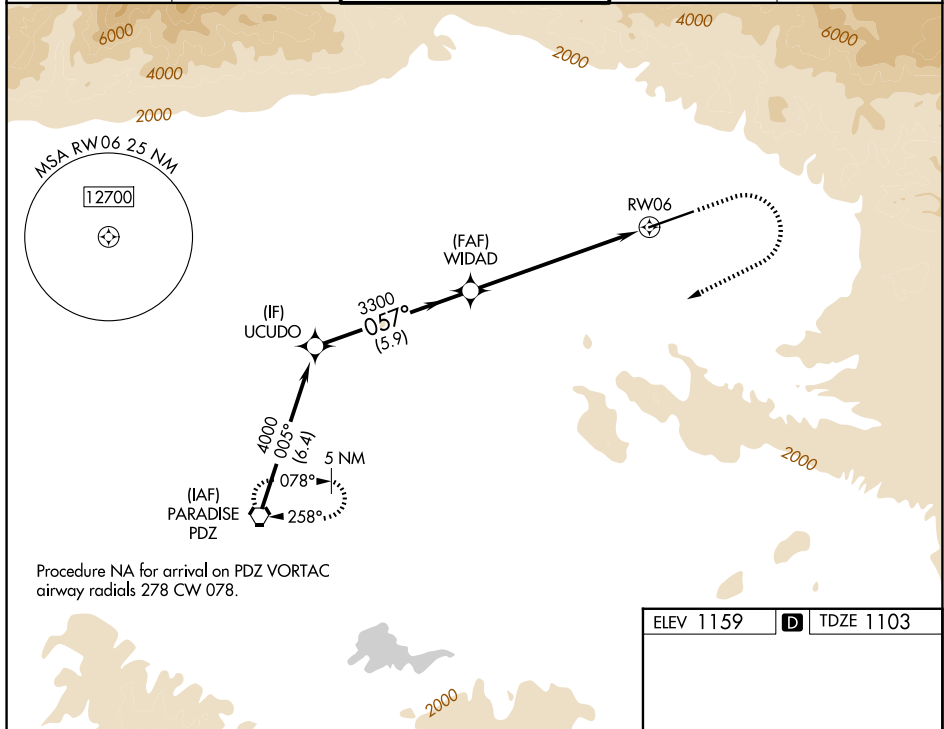
SAN BERNARDINO INTL (SBD)

RNP APCH

⚠ Circling NA northwest of Rwy 6-24. When local altimeter setting not received, use Ontario altimeter setting and increase DA to 1426 feet and all visibilities $\frac{1}{4}$ SM; increase all MDA 80 feet and LNAV Cats C/D and Circling Cat C visibility $\frac{1}{4}$ SM.

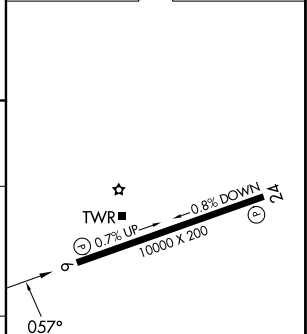
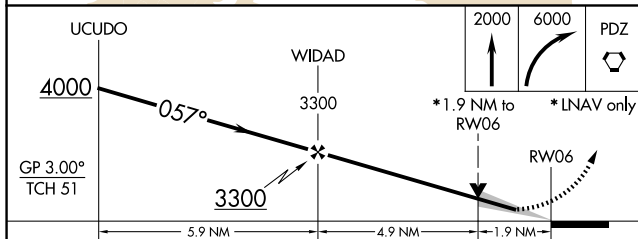
MISSED APPROACH: Climb to 2000 then climbing right turn to 6000 direct PDZ VORTAC and hold, continue climb-in-hold to 6000.
Missed approach requires minimum climb of 340 feet per NM to 4000; if unable to meet climb gradient, see RNAV (GPS) Y RWY 6.

D-ATIS 124.175	SOCAL APP CON 127.0 318.2	SAN BERNARDINO TOWER * 119.45 (CTAF) 0	GND CON 121.8	UNICOM 122.975
--------------------------	-------------------------------------	--	-------------------------	--------------------------



Procedure NA for arrival on PDZ VORTAC airway radials 278 CW 078.

ELEV 1159	D	TDZE 1103
-----------	----------	-----------



CATEGORY	A	B	C	D
LPV DA#	1353- $\frac{3}{4}$		250 (200- $\frac{3}{4}$)	
LNAV MDA#	1740-1	637 (600-1)	1740-1 $\frac{3}{4}$	637 (600-1 $\frac{3}{4}$)
CIRCLING	1740-1	581 (600-1)	1760-1 $\frac{3}{4}$ 601 (700-1 $\frac{3}{4}$)	2640-3 1481 (1500-3)

HIRL Rwy 6-24 **0**
REL Rws 6 and 24 **0**

SW-3, 09 JUL 2026 to 06 AUG 2026

SW-3, 09 JUL 2026 to 06 AUG 2026