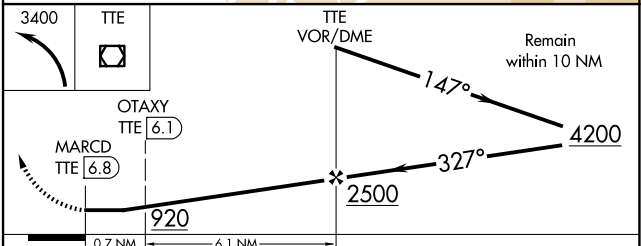
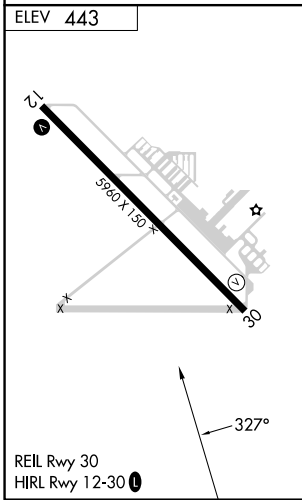
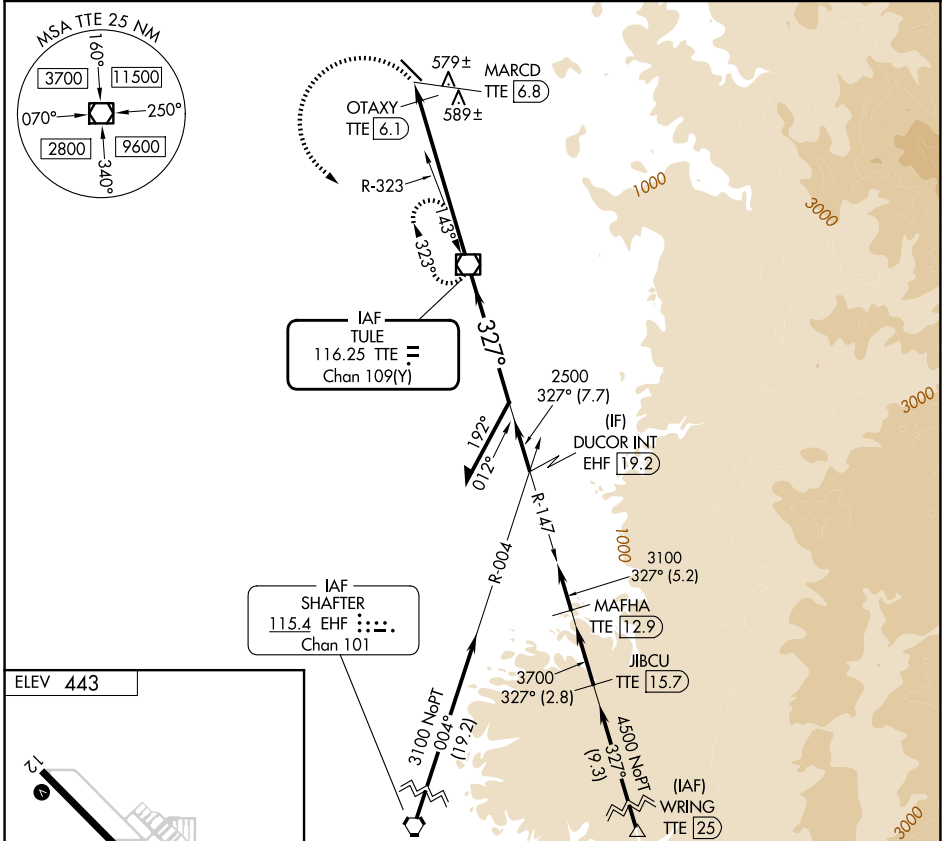


VOR/DME TTE 116.25 Chan 109(Y)	APP CRS 327°	Rwy Ldg TDZE Apt Elev N/A 443
--	------------------------	--

VOR-A
PORTERVILLE MUNI (P'TV)

DME required. ▼ ▲	MISSED APPROACH: Climbing left turn to 3400 direct TTE VOR/DME and hold.
-------------------------	--

AWOS-3PT 134.625	BAKERFIELD APP CON* 119.075	UNICOM 122.8 (CTAF) 0
----------------------------	---------------------------------------	---------------------------------



CATEGORY	A	B	C	D
CIRCLING	880-1 437 (500-1)	900-1 457 (500-1)	960-1½ 517 (600-1½)	1100-2 657 (700-2)

SW-2, 09 JUL 2026 to 06 AUG 2026

SW-2, 09 JUL 2026 to 06 AUG 2026