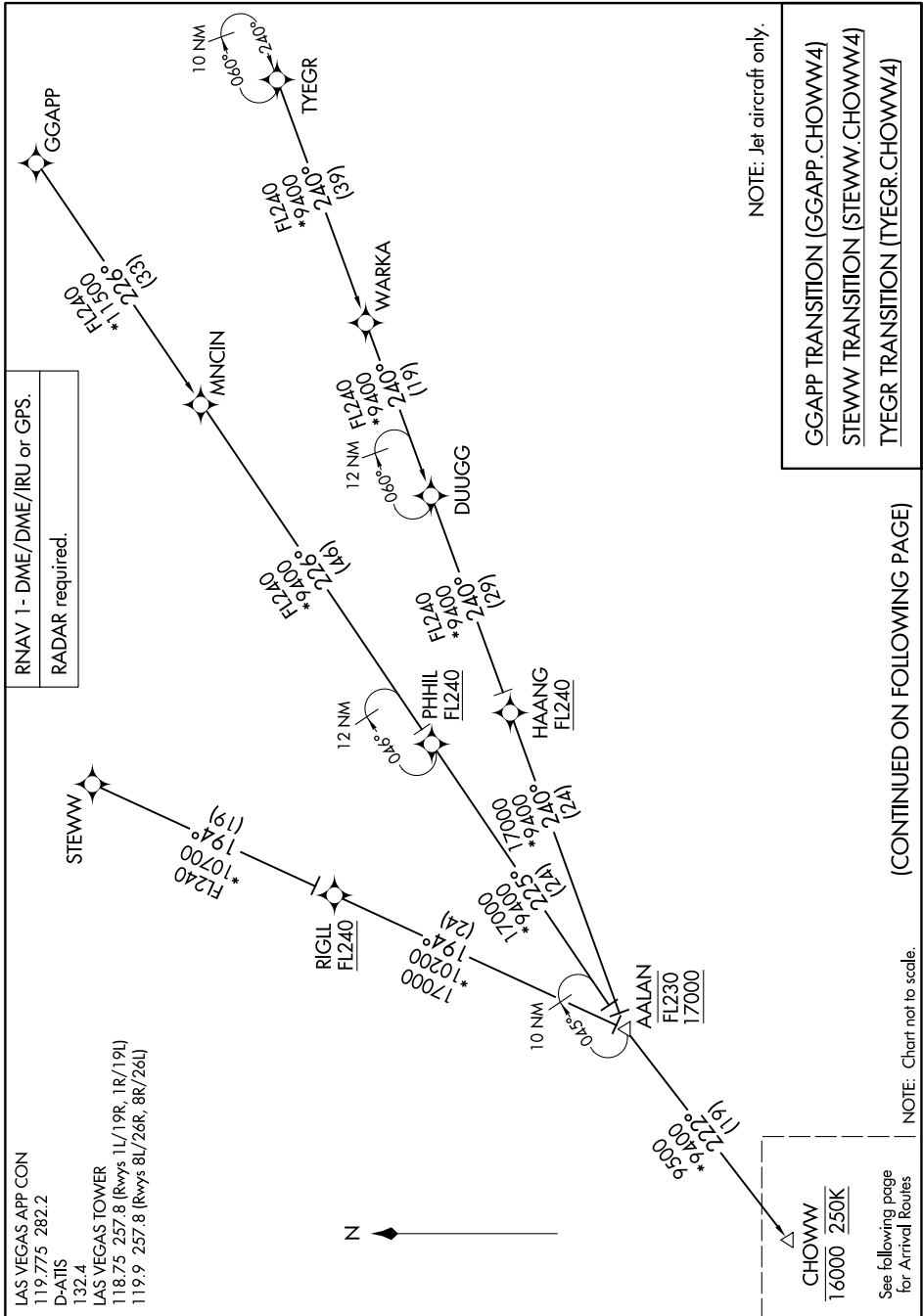


CHOWW FOUR ARRIVAL (RNAV) Transition Routes

SW-4, 09 JUL 2026 to 06 AUG 2026



(CONTINUED ON FOLLOWING PAGE)

CHOWW FOUR ARRIVAL (RNAV) Transition Routes

SW-4, 09 JUL 2026 to 06 AUG 2026

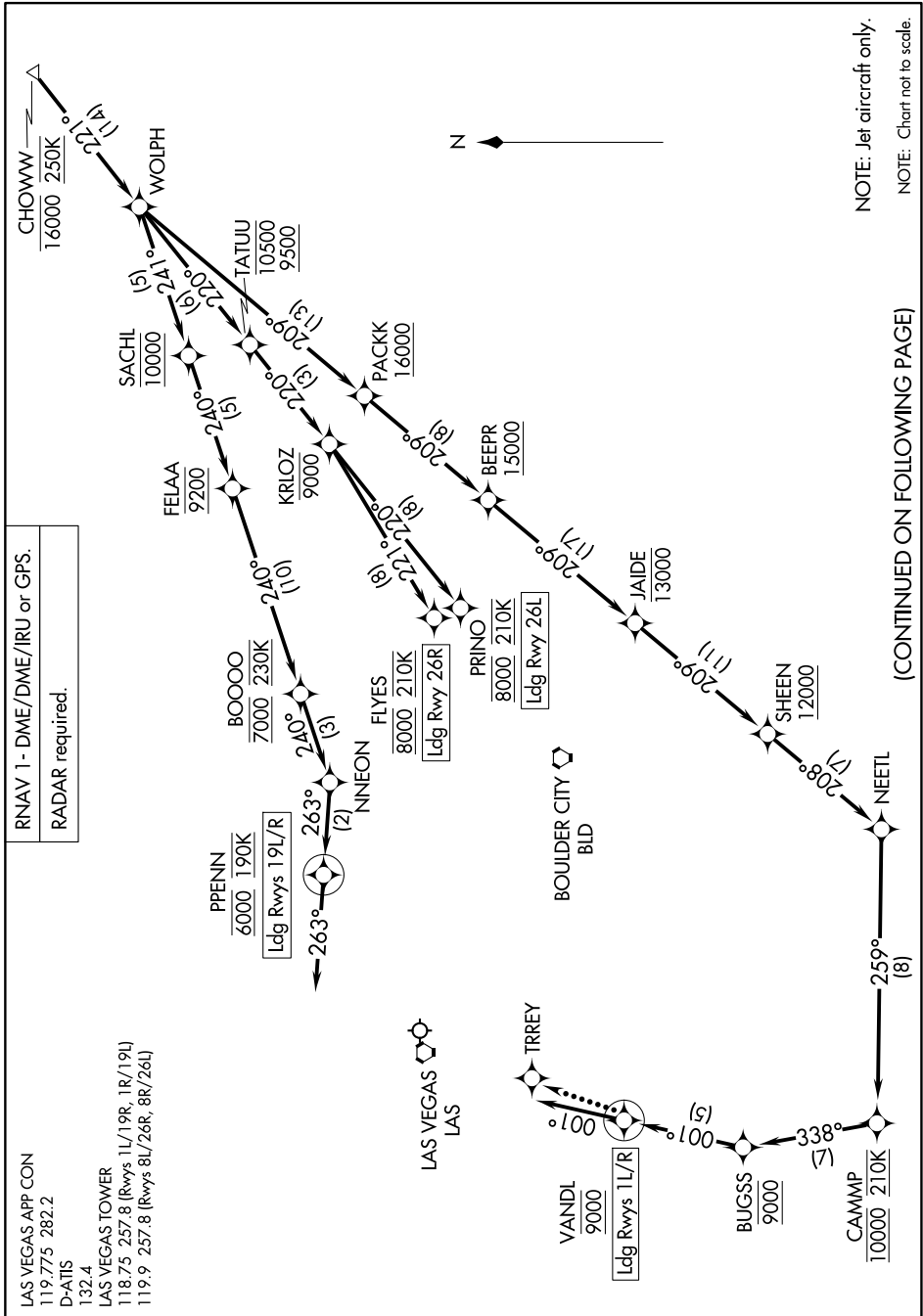
(CHOWW.CHOWW4) 25219

AL-662 (FAA)

HARRY REID INTL (LAS)
LAS VEGAS, NEVADA

CHOWW FOUR ARRIVAL (RNAV) Arrival Routes

SW-4, 09 JUL 2026 to 06 AUG 2026



CHOWW FOUR ARRIVAL (RNAV) Arrival Routes

(CHOWW.CHOWW4) 07AUG25

LAS VEGAS, NEVADA
HARRY REID INTL (LAS)

(CONTINUED ON FOLLOWING PAGE)

SW-4, 09 JUL 2026 to 06 AUG 2026

ARRIVAL ROUTE DESCRIPTION

From CHOWW on track 221° to WOLPH.

LANDING RUNWAYS 1L/R: From WOLPH on track 209° to cross PACKK at or above 16000, then on track 209° to cross BEEPR at or above 15000, then on track 209° to cross JAIDE at or below 13000, then on track 209° to cross SHEEN at or above 12000, then on track 208° to NEETL, then on track 259° to cross CAMMP at 10000 and at 210K, then on track 338° to cross BUGSS at 9000, then on track 001° to cross VANDL at 9000, then on track 001°. Expect RADAR vectors to final approach course.

LANDING RUNWAYS 19L/R: From WOLPH on track 241° to cross SACHL at 10000, then on track 240° to cross FELAA at 9200, then on track 240° to cross BOOOO at 7000 and at 230K, then on track 240° to NNEON, then on track 263° to cross PPENN at 6000 and at 190K, then on track 263°. Expect RADAR vectors to final approach course.

LANDING RUNWAY 26L: From WOLPH on track 220° to cross TATUU between 9500 and 10500, then on track 220° to cross KRLOZ at or below 9000, then on track 220° to cross PRINO at 8000 and at 210K. Expect ILS or LOC RWY 26L approach.

LANDING RUNWAY 26R: From WOLPH on track 220° to cross TATUU between 9500 and 10500, then on track 220° to cross KRLOZ at or below 9000, then on track 221° to cross FLYES at 8000 and at 210K. Expect ILS or LOC RWY 26R approach.

LOST COMMUNICATIONS

LANDING RUNWAY 1L: At VANDL, proceed to TRREY, then on the ILS or LOC RWY 1L approach.

LANDING RUNWAY 1R: At VANDL proceed on the RNAV (GPS) RWY 1R approach.

LANDING RUNWAY 19L: At PPENN proceed on the RNAV (RNP) RWY 19L approach, if unable, proceed visually via last track to intercept the final approach course; if unable, maintain 7000 proceed direct LAS VORTAC then direct BLD VORTAC and then on the ILS or LOC RWY 26L approach.

LANDING RUNWAY 26L: At PRINO proceed on the ILS or LOC RWY 26L approach.

LANDING RUNWAY 26R: At FLYES proceed on the ILS or LOC RWY 26R approach.

SW-4, 09 JUL 2026 to 06 AUG 2026

SW-4, 09 JUL 2026 to 06 AUG 2026