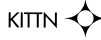


RATPK THREE DEPARTURE (RNAV)

AL-662 (FAA)

HARRY REID INTL (LAS)
LAS VEGAS, NEVADA

D-ATIS
132.4
CLNC DEL
118.0
CPDLC
GND CON
121.1 270.8 E of 1R/19L
121.9 254.3 W of 1L/19R
LAS VEGAS TOWER
118.75 257.8 (Rwys 1L/19R, 1R/19L)
119.9 257.8 (Rwys 8L/26R, 8R/26L)
LAS VEGAS DEP CON
125.9 307.25 (Rwys 8L/R)
133.95 353.7 (Rwys 1L/R, 19L/R, 26L/R)



**TOP ALTITUDE:
FL190**

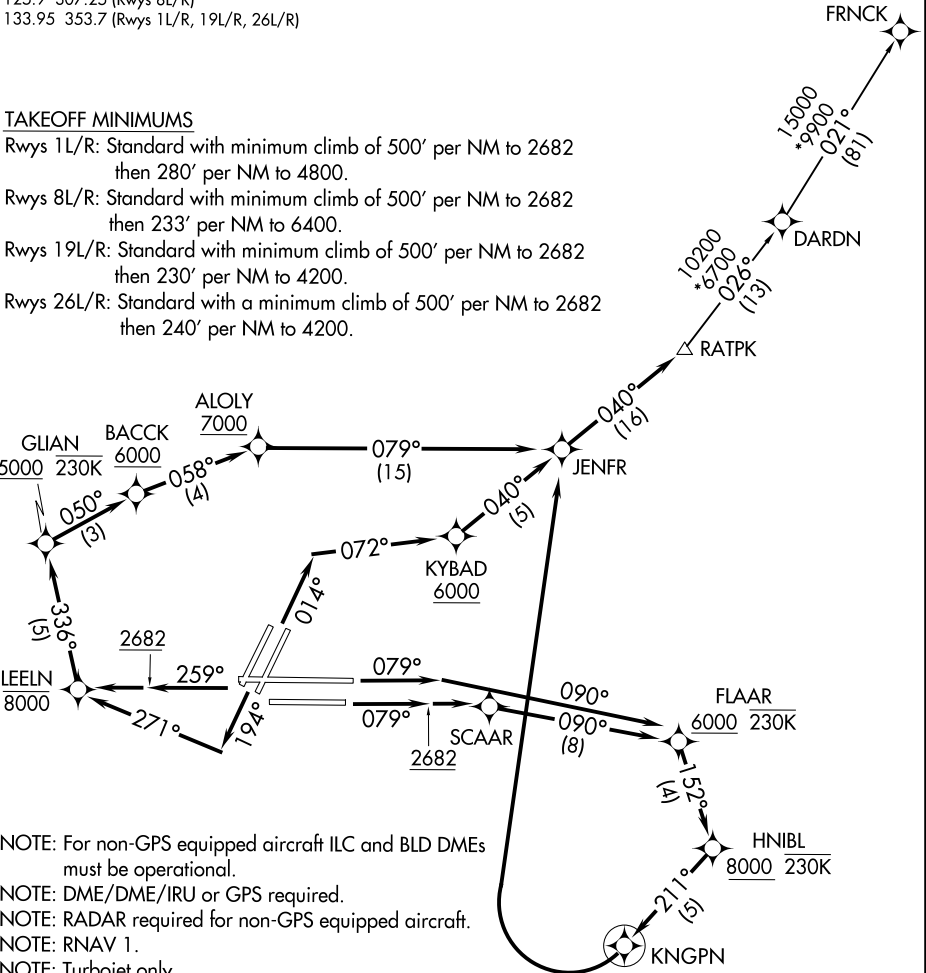
TAKEOFF MINIMUMS

Rwys 1L/R: Standard with minimum climb of 500' per NM to 2682 then 280' per NM to 4800.

Rwys 8L/R: Standard with minimum climb of 500' per NM to 2682 then 233' per NM to 6400.

Rwys 19L/R: Standard with minimum climb of 500' per NM to 2682 then 230' per NM to 4200.

Rwys 26L/R: Standard with a minimum climb of 500' per NM to 2682 then 240' per NM to 4200.



- NOTE: For non-GPS equipped aircraft ILC and BLD DMEs must be operational.
- NOTE: DME/DME/IRU or GPS required.
- NOTE: RADAR required for non-GPS equipped aircraft.
- NOTE: RNAV 1.
- NOTE: Turbojet only.

(CONTINUED ON FOLLOWING PAGE)

NOTE: Chart not to scale.

SW-4, 09 JUL 2026 to 06 AUG 2026

SW-4, 09 JUL 2026 to 06 AUG 2026



DEPARTURE ROUTE DESCRIPTION

TAKEOFF RUNWAYS 1L/R: Climb on heading 014° to intercept course 072° to cross KYBAD at or above 6000, then on track 040° to JENFR, then on track 040° to RATPK, thence

TAKEOFF RUNWAY 8L: Climb on heading 079° to intercept course 090° to cross FLAAR at or above 6000 and at or below 230K, then on track 152° to cross HNIBL at or above 8000 and at or below 230K, then on track 211° to KNGPN, then right turn direct JENFR, then on track 040° to RATPK, thence

TAKEOFF RUNWAY 8R: Climb on heading 079° to 2682, then direct SCAAR, then on track 090° to cross FLAAR at or above 6000 and at or below 230K, then on track 152° to cross HNIBL at or above 8000 and at or below 230K, then on track 211° to KNGPN, then right turn direct JENFR, then on track 040° to RATPK, thence

TAKEOFF RUNWAYS 19L/R: Climb on heading 194° to intercept course 271° to cross LEELN at or below 8000, then on track 336° to cross GLIAN at or above 5000 and at or below 230K, then on track 050° to cross BACCK at or above 6000, then on track 058° to cross ALOLY at or above 7000, then on track 079° to JENFR, then on track 040° to RATPK, thence

TAKEOFF RUNWAYS 26L/R: Climb on heading 259° to 2682, then direct LEELN to cross LEELN at or below 8000, then on track 336° to cross GLIAN at or above 5000 and at or below 230K, then on track 050° to cross BACCK at or above 6000, then on track 058° to cross ALOLY at or above 7000, then on track 079° to JENFR, then on track 040° to RATPK, thence

. . . . on (transition), maintain FL190. Expect filed altitude 10 minutes after departure.

FRNCK TRANSITION (RATPK3.FRNCK)

SW-4, 09 JUL 2026 to 06 AUG 2026

SW-4, 09 JUL 2026 to 06 AUG 2026