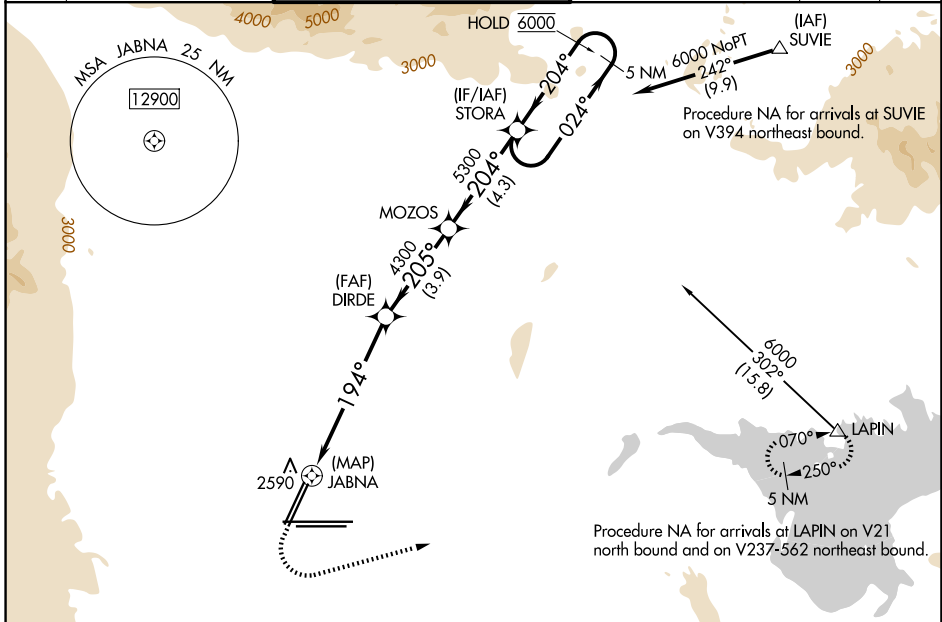


RNAV (GPS) Y RWY 19L

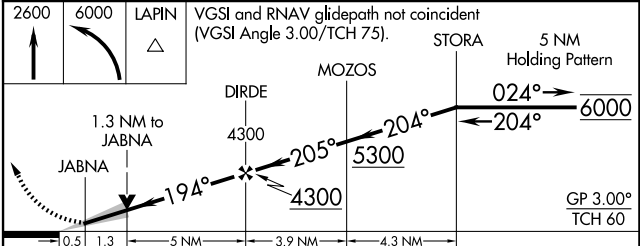
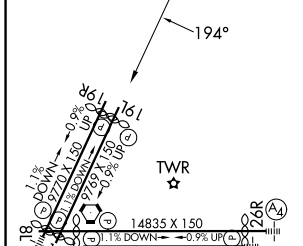
HARRY REID INTL (LAS)

WAAS CH 45542 W19A	APP CRS 194°	Rwy Ldg TDZE Apt Elev	8807 2112 2181
--	------------------------	-----------------------------	---

RNP APCH - GPS.		MISSED APPROACH: Climb to 2600 then climbing left turn to 6000 direct LAPIN and hold.	
⚠ For uncompensated Baro-VNAV systems, LNAV/VNAV NA below 0°C or above 54°C.			
D-ATIS 132.4	LAS VEGAS APP CON 125.025 379.15 (West) 119.775 282.2 (East)	LAS VEGAS TOWER 118.75 257.8 (Rwy 1L/19R, 1R/19L) 119.9 257.8 (Rwy 8L/26R, 8R/26L)	GND CON 121.1 270.8 E of 1R/19L 121.9 254.3 W of 1L/19R
CLNC DEL 118.0		CPDLC	



ELEV 2181	D	TDZE 2112
-----------	----------	-----------



CATEGORY	A	B	C	D
LPV DA		2312-1	200 (200-1)	
LNAV/VNAV DA		2677-1½	565 (500-1½)	
LNAV MDA	2740-1	628 (600-1)	2740-1¾	628 (600-1¾)
CIRCLING	3020-1¼	3060-1¼	3100-2¾	3540-3
	839 (900-1¼)	879 (900-1¼)	919 (1000-2¾)	1359 (1400-3)

MIRL Rwy 1R-19L
REIL Rwy 1R, 8R, 19L and 19R
HIRL Rwy 1L-19R, 8L-26R and 8R-26L

SW-4, 09 JUL 2026 to 06 AUG 2026

SW-4, 09 JUL 2026 to 06 AUG 2026