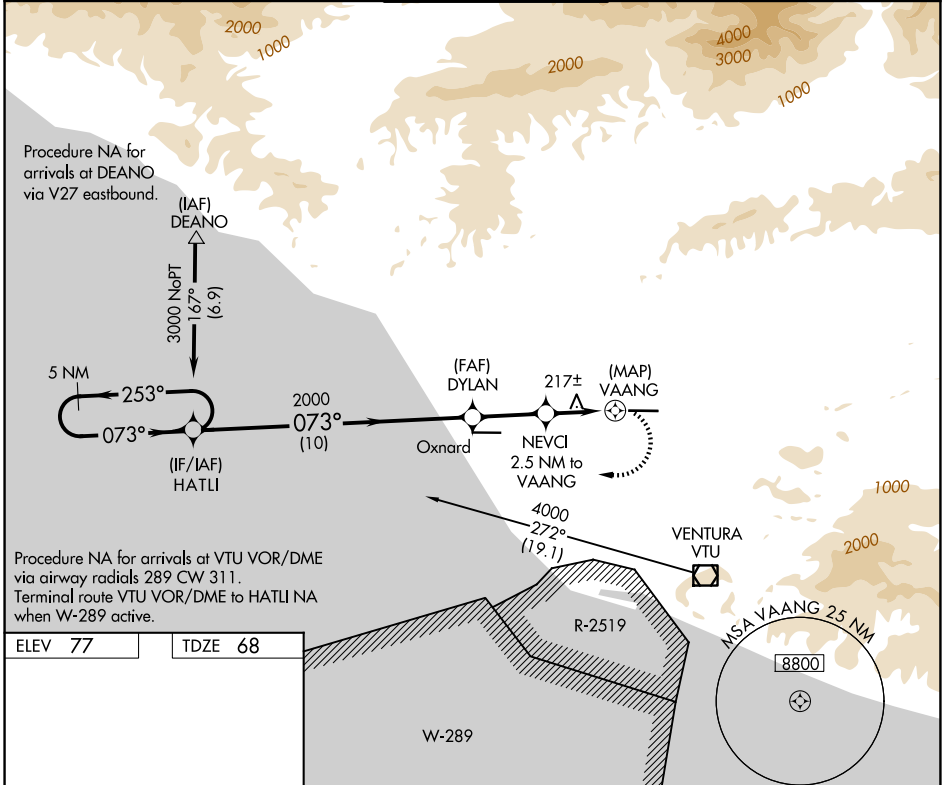


APP CRS	Rwy Ldg	6013
073°	TDZE	68
	Apt Elev	77

RNAV (GPS) RWY 8

CAMARILLO (CMA)

<p>⚠ Circling NA north of Rwy 8-26. DME/DME RNP-0.3 NA. When local altimeter setting not received, use Oxnard altimeter setting and increase all MDA 20 feet.</p>		<p>MISSED APPROACH: Climbing right turn to 3000 direct HATLI and hold.</p>		
<p>ATIS 126.025</p>	<p>POINT MUGU APP CON * 124.7 335.5</p>	<p>CAMARILLO TOWER * 128.2 (CTAF) 0 269.4</p>	<p>GND CON 121.8</p>	<p>UNICOM 122.95</p>



ELEV 77	TDZE 68
---------	---------

REIL Rwys 8 and 26 **Ⓛ**
MIRL Rwy 8-26 **Ⓛ**

CATEGORY	A	B	C	D
RNAV MDA	840-1 772 (800-1)	840-1¼ 772 (800-1¼)	840-2½	772 (800-2½)
CIRCLING	840-1 763 (800-1)	840-1¼ 763 (800-1¼)	840-2½ 763 (800-2½)	1100-3 1023 (1100-3)

SW-3, 09 JUL 2026 to 06 AUG 2026

SW-3, 09 JUL 2026 to 06 AUG 2026