

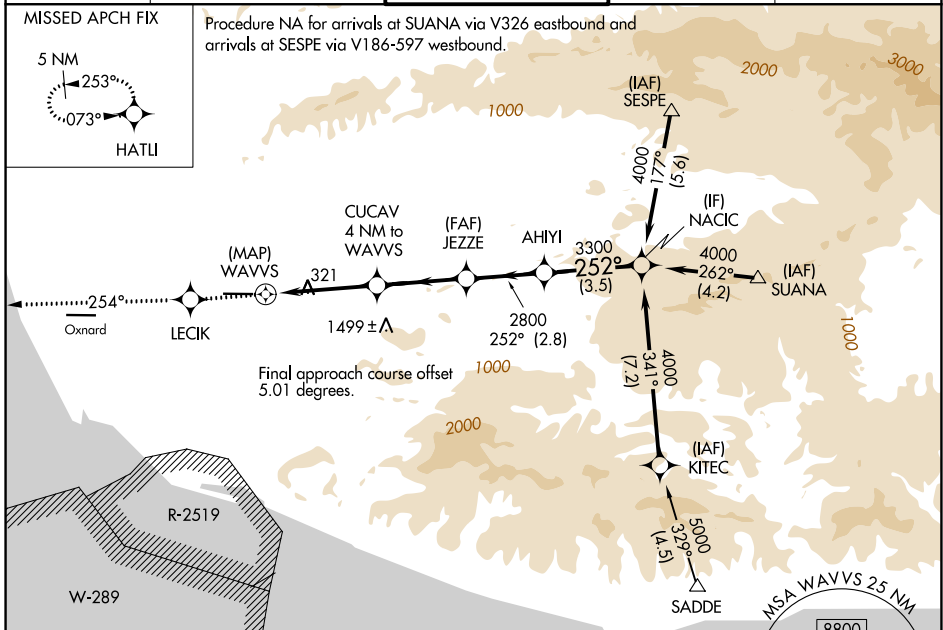
APP CRS	Rwy Ldg	6013
252°	TDZE	77
	Apt Elev	77

RNAV (GPS) Y RWY 26

CAMARILLO (CMA)

RNP APCH - GPS	<p>▼ Circling NA north of Rwy 8-26. When local altimeter setting not received, use OXR altimeter setting and increase all MDAs 20 feet. VDP NA when using OXR altimeter setting.</p>	MISSED APPROACH: Climb to 3000 direct LECIK and via 254° track to HATLI and hold.
----------------	--	---

ATIS 126.025	POINT MUGU APP CON * 124.7 335.5	CAMARILLO TOWER * 128.2 (CTAF) 0 269.4	GND CON 121.8	UNICOM 122.95
------------------------	--	--	-------------------------	-------------------------

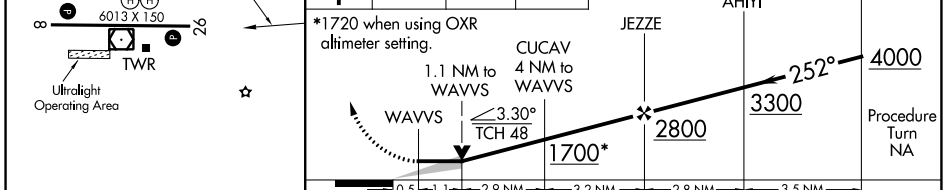


SW-3, 09 JUL 2026 to 06 AUG 2026

SW-3, 09 JUL 2026 to 06 AUG 2026

ELEV 77	TDZE 77
---------	---------

3000	LECIK	HATLI	VGSI and descent angles not coincident (VGSI Angle 3.00/TCH 48).
------	-------	-------	--



CATEGORY	A	B	C	D
LNAV MDA	620-1 543 (600-1)		620-1½ 543 (600-1½)	620-1¾ 543 (600-1¾)
CIRCLING	620-1 543 (600-1)		640-1½ 563 (600-1½)	1100-3 1023 (1100-3)