

WAAS CH 82201 W27A	APP CRS 269°	Rwy Ldg TDZE Apt Elev	5401 818 818
--	------------------------	-----------------------------	---

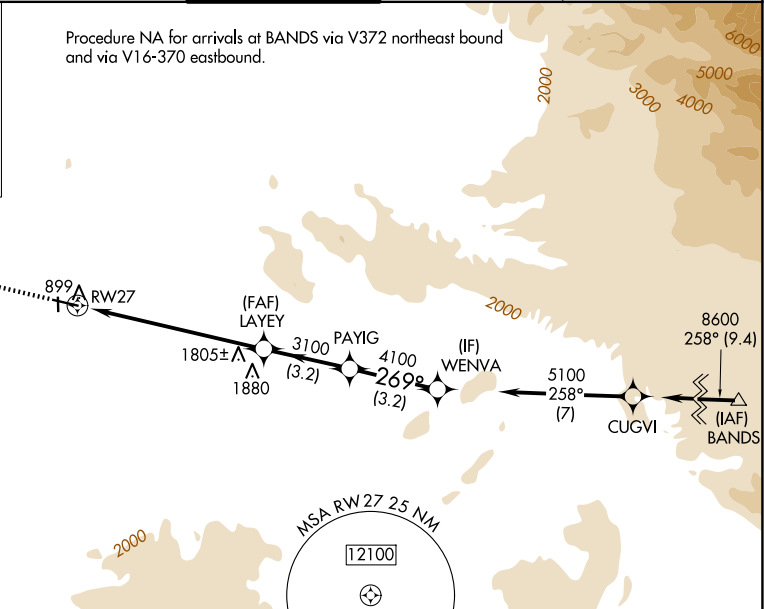
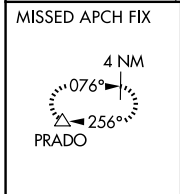
RNAV (GPS) RWY 27

RIVERSIDE (R.AL)

▽ DME/DME RNP -0.3 NA.
⚠ For uncompensated Baro-VNAV systems, LNAV/VNAV NA below -1.6°C (4°F) or above 46°C (116°F).
 Circling NA for Cat D north of Rwy 9-27.
 Visibility reduction by helicopters NA.

MISSED APPROACH: Climb to 4000 direct ICIYE and via 246° track to PRADO and hold.

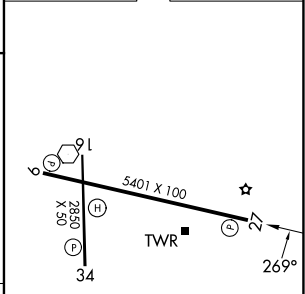
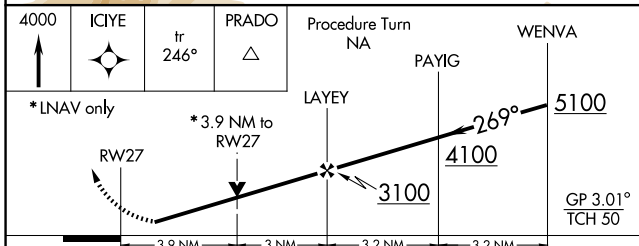
ATIS 128.8	SOCAL APP CON 135.4 377.125	RIVERSIDE TOWER ★ 121.0 (CTAF) 0 257.8	GND CON 124.125	UNICOM 122.95
----------------------	---------------------------------------	---	---------------------------	-------------------------



SW-3, 09 JUL 2026 to 06 AUG 2026

SW-3, 09 JUL 2026 to 06 AUG 2026

ELEV 818	TDZE 818
----------	----------



CATEGORY	A	B	C	D
LPV DA		1236-1½	418 (500-1½)	
LNAV/VNAV DA		1368-2	550 (600-2)	
LNAV MDA	2100-1¼ 1282 (1300-1¼)	2100-1½ 1282 (1300-1½)	2100-3	1282 (1300-3)
CIRCLING	2100-2	1282 (1300-2)	2100-3	1282 (1300-3)

MIRL Rwy 9-27 and 16-34 **⓪**