

HI-ILS or LOC/DME RWY 12

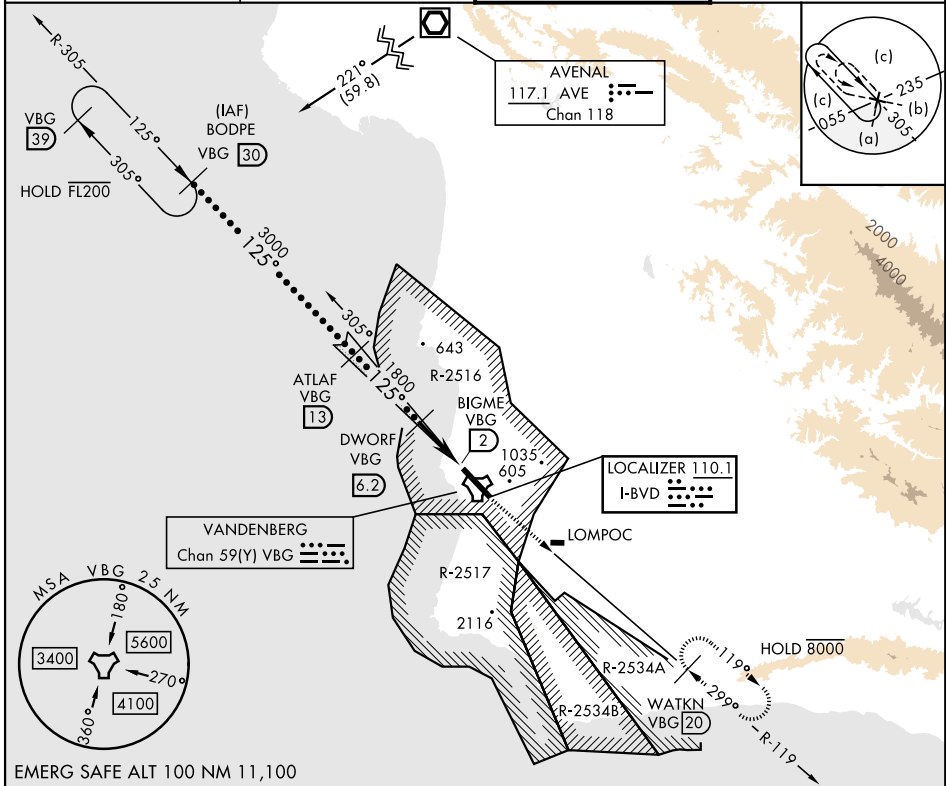
LOC I-BVD 110.1	APCH CRS 125°	Rwy Idg 15,000 TDZE 265 Arprt Elev 368
---------------------------	-------------------------	---

[USSF]

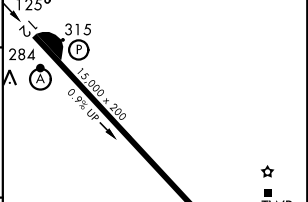
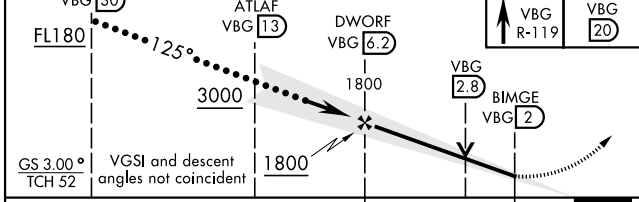
VANDENBERG SFB (KVBG)

DME required * When ALS inop, increase RVR to 40 and vis to 3/4 mile. ** When ALS inop, increase CAT CDE vis to 1 1/4 mile.	ALSF-2 	MISSED APPROACH: Climb out VBG TACAN R-119 until 20 DME (WATKN) and hold. Continue climb in hold maintain 7000.
---	------------	---

ATIS 133.125 257.975	SANTA BARBARA APP/DEP CON * 124.15 327.8	TOWER * 124.95 0 (CTAF) 326.2	GND CON 121.75 275.8
--------------------------------	--	---	--------------------------------



BODPE VBG 30	ATLAF VBG 13	DWORF VBG 6.2	7000 VBG R-119	WATKN VBG 20	ELEV 368	TDZE 265
--------------	--------------	---------------	----------------	--------------	----------	----------



CATEGORY	C	D	E
S-ILS 12 *	465/24	200 (100-1/2)	
S-LOC 12 **	700/40	435 (400-3/4)	
CIRCLING	1020-1 3/4 652 (700-1 3/4)	1180-2 3/4 812 (900-2 3/4)	1560-3 1192 (1200-3)

HI-ILS or LOC/DME RWY 12

SW-3, 09 JUL 2026 to 06 AUG 2026

SW-3, 09 JUL 2026 to 06 AUG 2026