

HI-TACAN RWY 12

TACAN VBG Chan 59(Y)	APCH CRS 129°	Rwy Idg 15,000 TDZE 265 Arprt Elev 368
--------------------------------	-------------------------	---

[USSF]

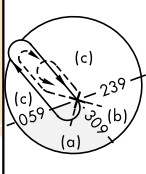
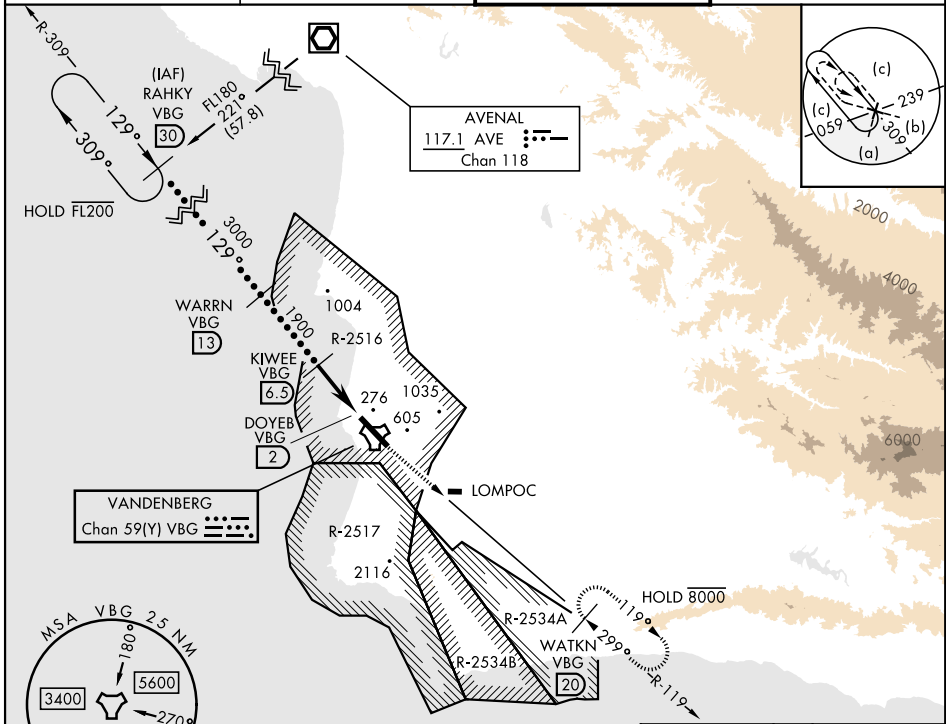
VANDENBERG SFB (KVBG)

▲ * When ALS inop, increase CAT CDE vis to 1 3/8 miles.



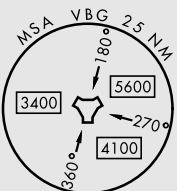
MISSED APPROACH: Climb out VBG TACAN R-119 until 20 DME (WATKN) and hold. Continue climb in hold maintain 7000.

ATIS 133.125 257.975	SANTA BARBARA APP/DEP CON ★ 124.15 327.8	TOWER ★ 124.95 (CTAF) 326.2	GND CON 121.75 275.8
--------------------------------	---	--	--------------------------------

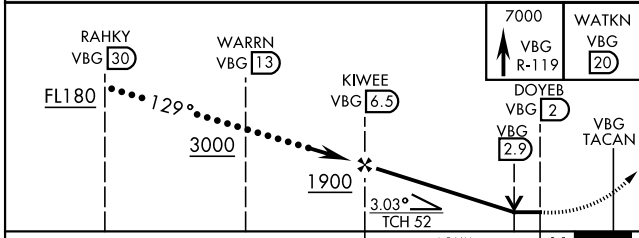


AVENAL
117.1 AVE
Chan 118

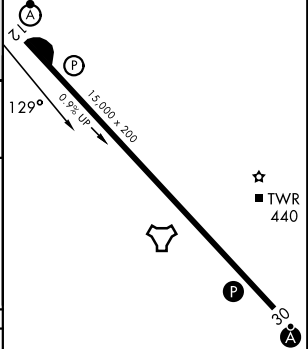
VANDENBERG
Chan 59(Y) VBG



EMERG SAFE ALT 100 NM 11,100



ELEV	368	TDZE	265
------	-----	------	-----



CATEGORY	C	D	E
S-12*	740/50	475	(400-1)
CIRCLING	1020-1 3/4 652 (700-1 3/4)	1180-2 3/4 812 (900-2 3/4)	1560-3 1192 (1200-3)

HIRL Rwy 12-30

HI-TACAN RWY 12

SW-3, 09 JUL 2026 to 06 AUG 2026

SW-3, 09 JUL 2026 to 06 AUG 2026