

HI-TACAN Z RWY 24R

TACAN NKX Chan 33	APCH CRS 247°	Rwy Idg TDZE Arpt Elev	24R 12,000 24L 8001 24R 475 24L 477 477
-----------------------------	-------------------------	------------------------------	--

[USN]
MIRAMAR MCAS (JOE FOSS FLD) (KNKX)

When ALS inop, increase CAT CDE vis to 1 1/8 miles.
 ** CAT E circling not authorized S of Rwy 6R-24L.

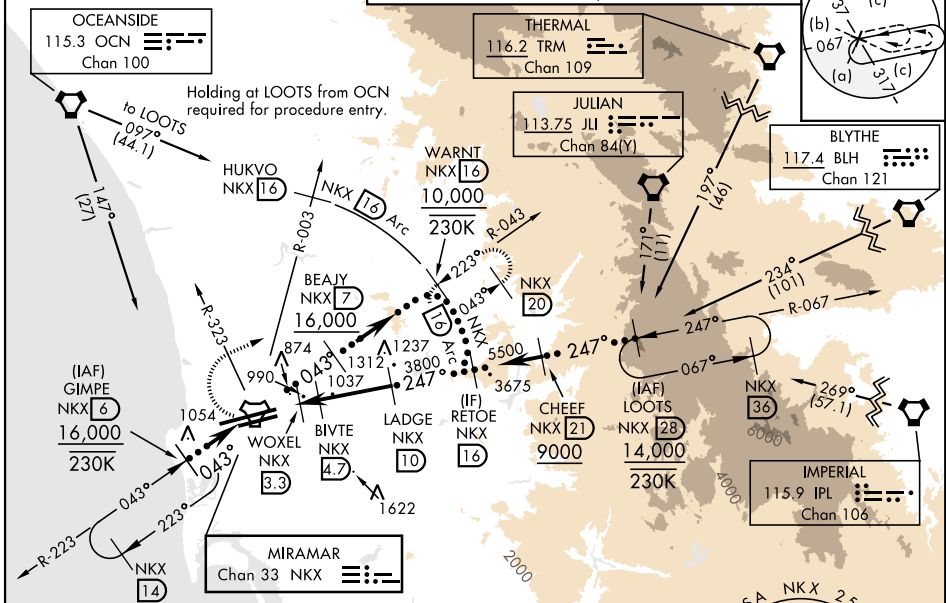


MISSED APPROACH: Climb to 1500, then climbing right turn to 7000 via NKX TACAN R-003 to HUKVO. Arc NE of NKX via 16 mile arc to WARNT and hold. Cross R-323 at 3000 mandatory, cross HUKVO at 6000 mandatory.

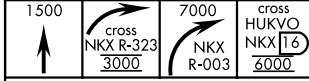
ATIS ★ 133.475 352.0	SOCAL APP CON 132.2 269.1	FOSS TOWER ★ 135.2 298.925 0	GND CON 128.625 307.325	LA CENTER 291.7	ASR/ PAR
--------------------------------	-------------------------------------	--	-----------------------------------	---------------------------	-------------

Knots	60	120	180	240	300	360
V/V(ftm)	275	550	825	1100	1375	1650

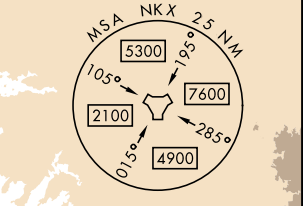
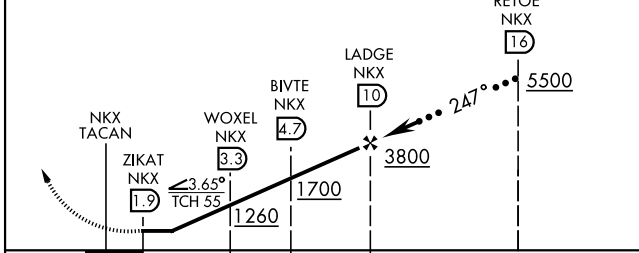
ATC climb of 275 ft/NM to 6000



EMERG SAFE ALT 100 NM 13,600

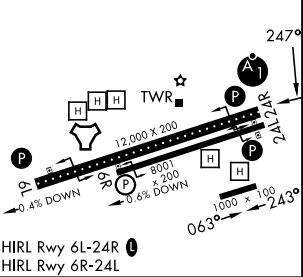


VGSI and descent angles not coincident.



ELEV	477	TDZE 24R	475
		TDZE 24L	477

CATEGORY	C	D	E
S-24R*	1140-1 1/2	665	(700-1 1/2)
SIDESTEP 24L	1140-1 7/8 663 (700-1 7/8)	1140-2 663 (700-2)	1140-2 1/4 663 (700-2 1/4)
CIRCLING**	1140-1 7/8 663 (700-1 7/8)	1180-2 1/4 703 (800-2 1/4)	1360-3 883 (900-3)



HI-TACAN Z RWY 24R

SW-3, 09 JUL 2026 to 06 AUG 2026

SW-3, 09 JUL 2026 to 06 AUG 2026