

SAN DIEGO, CALIFORNIA

ILS Y or LOC/DME Y RWY 24R

LOC/DME I-NKX 111.15 Chan 48(Y)	APCH CRS 243°	Rwy Ldg 8001	24L 12,000	24R 475
		TDZE 477		
		Arpt Elev 477		

[USN]

MIRAMAR MCAS (JOE FOSS FLD) (KNKX)

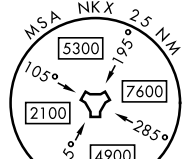
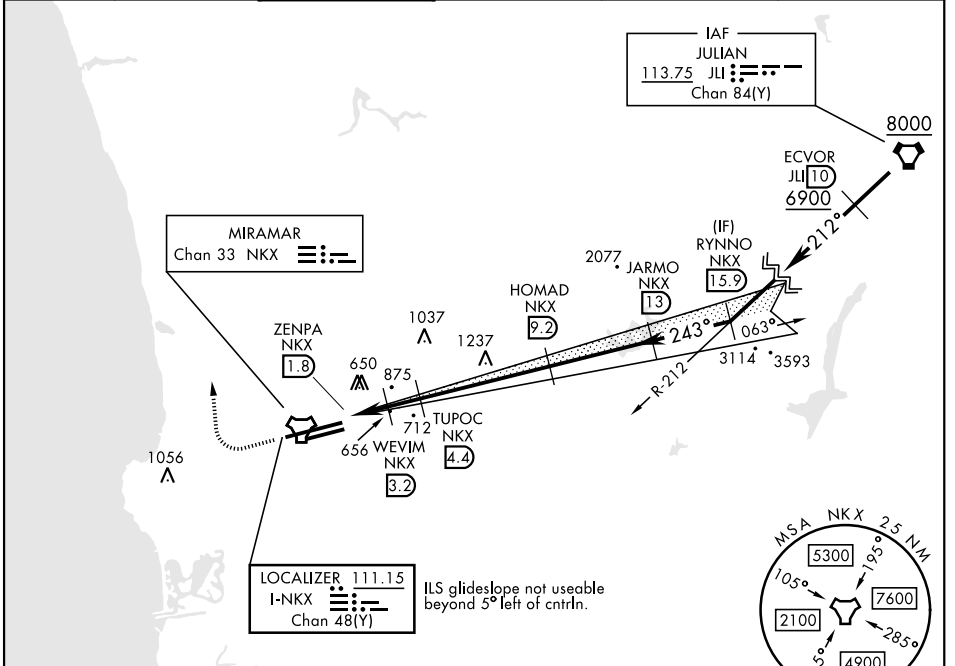
TACAN or RADAR required

- * When ALS inop, increase vis to ¾ mile.
- ** When ALS inop, increase CAT AB vis to 1 mile, CAT CDE vis to 1 ½ miles.
- *** CAT E circling not authorized S of Rwy 6R-24L.

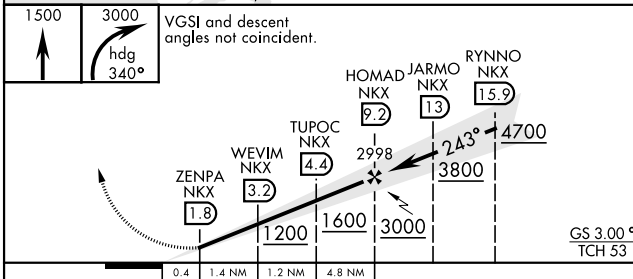


MISSED APPROACH: Climb to 1500, then climbing right turn to 3000 via heading 340°. Expect radar vectors.

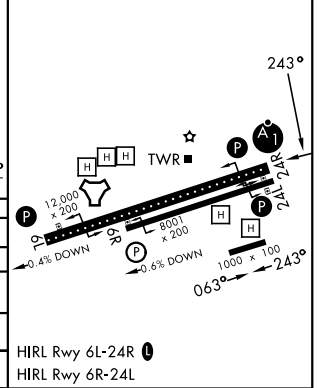
ATIS ★ 133.475 352.0	SOCAL APP CON 132.2 269.1	FOSS TOWER ★ 135.2 298.925	GND CON 128.625 307.325	LA CENTER 291.7	ASR/ PAR
--	---	--	---	---------------------------	-------------



EMERG SAFE ALT 100 NM 13,600



ELEV 477	TDZE 24L 477
	TDZE 24R 475



CATEGORY	A	B	C	D	E
S-ILS 24R*	675 - ½		200	(200-½)	
S-LOC 24R**	920 - ½	445 (500-½)	920 - 7/8	445 (500 - 7/8)	
SIDESTEP 24L	920-1	443 (500-1)	920-1 ½ 443 (500-1 ½)	920-2 443 (500-2)	
CIRCLING***	940-1 463 (500-1)	960-1 483 (500-1)	960-1 ½ 483 (500-1 ½)	1180-2 ¼ 703 (800-2 ¼)	1360-3 883 (900-3)

HIRL Rwy 6L-24R

HIRL Rwy 6R-24L

SAN DIEGO, CALIFORNIA

32° 52' N - 117° 09' W

MIRAMAR MCAS (JOE FOSS FLD) (KNKX)

Orig 14JUL22

ILS Y or LOC/DME Y RWY 24R

SW-3, 09 JUL 2026 to 06 AUG 2026

SW-3, 09 JUL 2026 to 06 AUG 2026