

TACAN Y RWY 24R

TACAN NKX Chan 33	APCH CRS 247°	Rwy ldg TDZE 24R 12,000 24L 475 Arprt Elev 477	24L 8001 24L 477
-----------------------------	-------------------------	--	-----------------------------------

[USN]

MIRAMAR MCAS (JOE FOSS FLD) (KNKX)

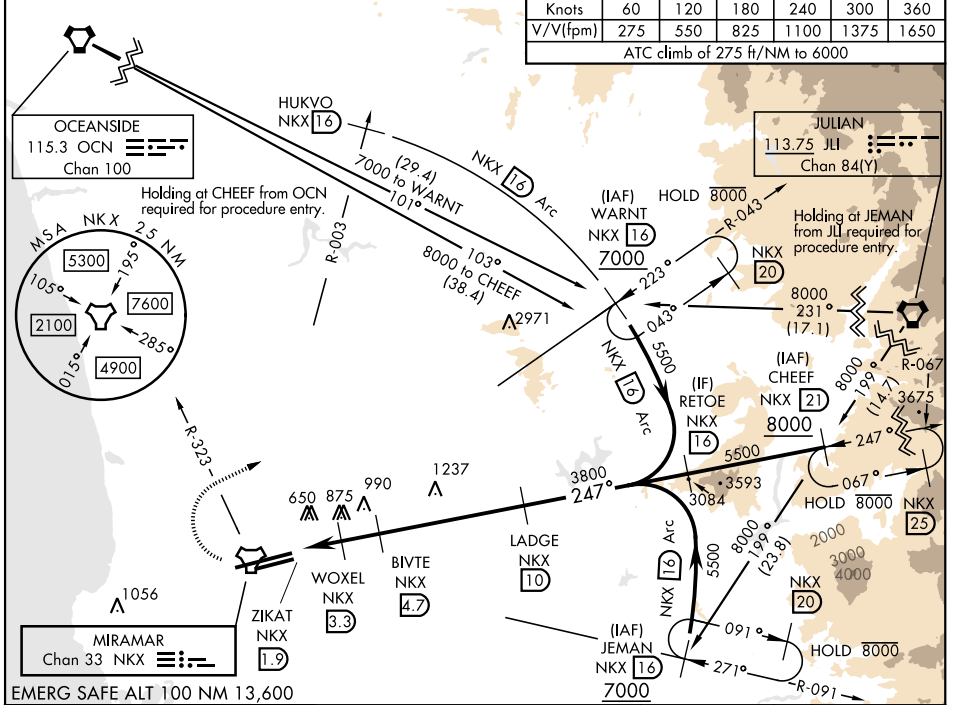
▲ * When ALS inop, increase CAT AB vis to 1 mile, CAT CD to 1 7/8 miles.

ALSF-1
MISSED APPROACH: Climb to 1500, then climbing right turn to 7000 via NKX TACAN R-003 to HUKVO. Arc NE of NKX via the 16 mile arc to WARNT and hold. Cross NKX R-323 at 3000 mandatory, cross HUKVO at 6000 mandatory.

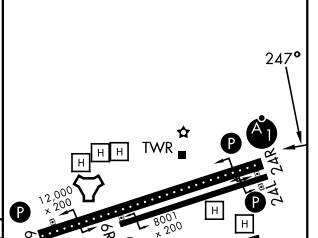
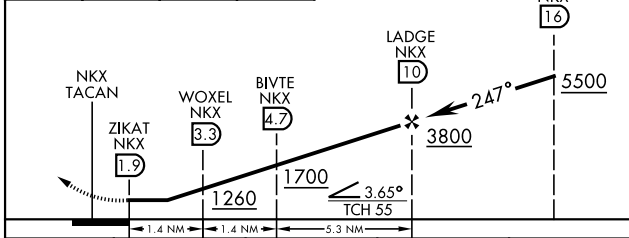
ATIS ★ 133.475 352.0	SOCAL APP CON 132.2 269.1	FOSS TOWER ★ 135.2 298.925	GND CON 128.625 307.325	LA CENTER 291.7	ASR/ PAR 240 1375 300 1650
--	---	--	---	---------------------------	-------------------------------------

Knots	60	120	180	240	300	360
V/V(fpm)	275	550	825	1100	1375	1650

ATC climb of 275 ft/NM to 6000



ELEV 477	TDZE 24R 475
	TDZE 24L 477



CATEGORY	A	B	C	D
S-24R *	1140-1/2	665 (700-1/2)	1140-1 1/2	665 (700-1 1/2)
SIDE-STEP 24L	1140-1	663 (700-1)	1140-1 7/8	1140-2
			663 (700-1 7/8)	663 (700-2)
CIRCLING	1140-1	663 (700-1)	1140-1 7/8	1180-2 1/4
			663 (700-1 7/8)	703 (800-2 1/4)

HIRL Rwy 6L-24R
HIRL Rwy 6R-24L

TACAN Y RWY 24R

SW-3, 09 JUL 2026 to 06 AUG 2026

SW-3, 09 JUL 2026 to 06 AUG 2026