

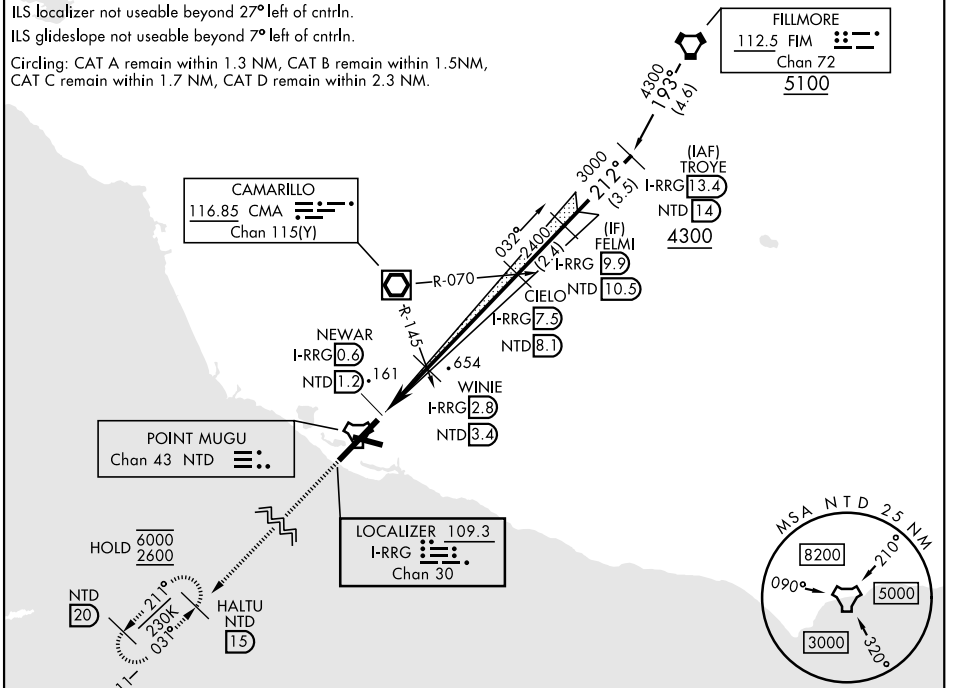
OXNARD, CALIFORNIA

# ILS or LOC RWY 21

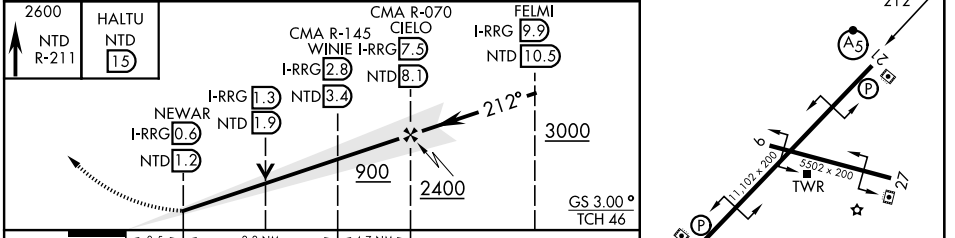
LOC/DME I-RRG <b>109.3</b> Chan <b>30</b>	APCH CRS <b>212°</b>	Rwy Idg <b>11,102</b> TDZE <b>13</b> Arpt Elev <b>13</b>	[USN] POINT MUGU NAS (NAVAL BASE VENTURA CO) (KNTD)
---	-------------------------	--	---

DME or RADAR required		MALSR <b>(A5)</b>	MISSED APPROACH: Climb to 2600 on NTD TACAN R-211 to HALTU and hold.	
*When ALS inop, increase vis to 3/4 mile. **When ALS inop, increase CAT AB vis to 1 mile, CAT CDE vis to 1 1/2 miles. ***Circling not authorized SE of Rwy 3-21.				

ATIS ★ <b>125.55 363.05</b>	APP CON ★ <b>128.65 307.275</b>	TOWER ★ <b>124.85 290.375</b>	GND CON <b>121.6 360.2</b>	ASR/PAR
--------------------------------	------------------------------------	----------------------------------	-------------------------------	---------



ELEV 13	TDZE 13
---------	---------



CATEGORY	A	B	C	D	E
S-ILS 21 *	213 - 1/2		200	(200-1/2)	
S-LOC 21 **	420 - 1/2	407 (500-1/2)	420-3/4	407 (500-3/4)	
CIRCLING***	420-1 407 (500-1)	520-1 507 (600-1)	520-1 1/2 507 (600-1 1/2)	580-2 567 (600-2)	NOT AUTHORIZED

HIRL all rws

OXNARD, CALIFORNIA 34° 07'N - 119° 07'W POINT MUGU NAS (NAVAL BASE VENTURA CO) (KNTD)

Orig 27NOV25

# ILS or LOC RWY 21

SW-3, 09 JUL 2026 to 06 AUG 2026

SW-3, 09 JUL 2026 to 06 AUG 2026