

OXNARD, CALIFORNIA

# RNAV (GPS) RWY 3

WAAS CH <b>61626</b> W03A	APCH CRS <b>032°</b>	Rwy ldg TDZE Arprt Elev	<b>11,102</b> <b>10</b> <b>13</b>
---------------------------------	-------------------------	-------------------------------	---

(USN)

POINT MUGU NAS (NAVAL BASE VENTURA CO) (KNTD)

RNP APCH - GPS  
 \* When ALS inop, increase vis to 1 mile.  
 \*\* Circling not authorized SE of Rwy 3-21.



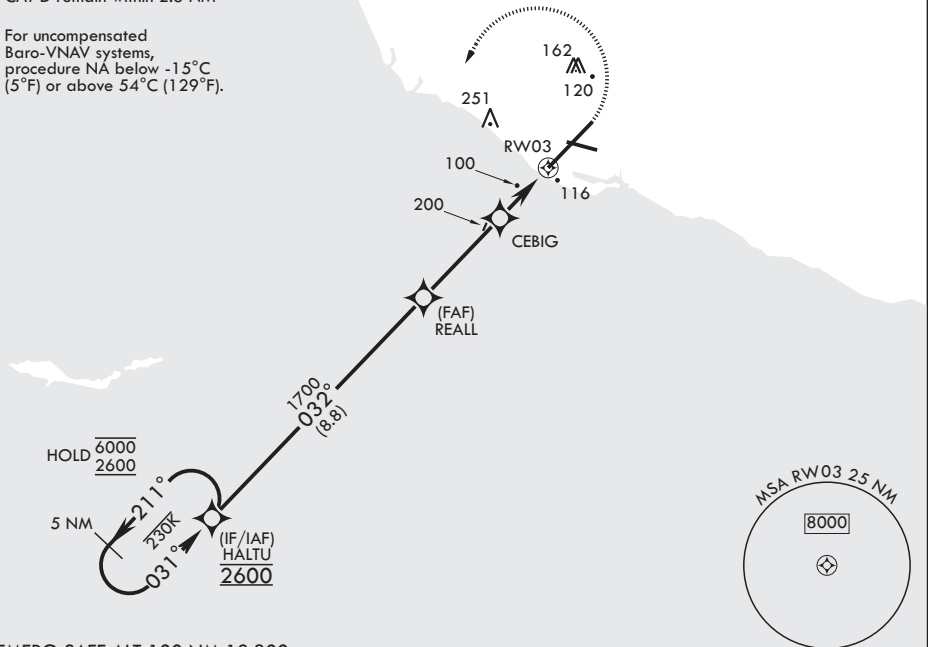
MISSED APPROACH: Climb to 600 then climbing left turn to 2600 direct HALT and hold.

ATIS* <b>125.55 363.05</b>	APP CON/DEP CON* <b>128.65 307.275</b>	TOWER* <b>124.85 290.375</b>	GND CON <b>121.6 360.2</b>	ASR/PAR
-------------------------------	---	---------------------------------	-------------------------------	---------

Circling:

- CAT A remain within 1.3 NM
- CAT B remain within 1.5 NM
- CAT C remain within 1.7 NM
- CAT D remain within 2.3 NM

For uncompensated Baro-VNAV systems, procedure NA below -15°C (5°F) or above 54°C (129°F).



EMERG SAFE ALT 100 NM 12,300

5 NM Holding Pattern	HALT	600	2600	HALT	ELEV 13	TDZE 10
6000	211°	crs 032°	2600	032°		
2600	031°					
GP 3.00°						
TCH 46						
	REALL	CEBIG	1 NM to RWY 3	RWY 3		
	1700	680				
		3.2 NM	2 NM			
CATEGORY	A	B	C	D		
LPV DA	210-¾	200	(200-¾)			
LNAV/VNAV DA*	371-¾	361	(400-¾)			
LNAV MDA*	380-¾	370	(400-¾)			
CIRCLING**	420-1 407 (500-1)	520-1 507 (600-1)	520-1½ 507 (600-1½)	580-2 567 (600-2)		

OXNARD, CALIFORNIA

34°07'N - 119°07'W POINT MUGU NAS (NAVAL BASE VENTURA CO) (KNTD)

Amdt 7 27NOV25

# RNAV (GPS) RWY 3

SW-3, 09 JUL 2026 to 06 AUG 2026

SW-3, 09 JUL 2026 to 06 AUG 2026