

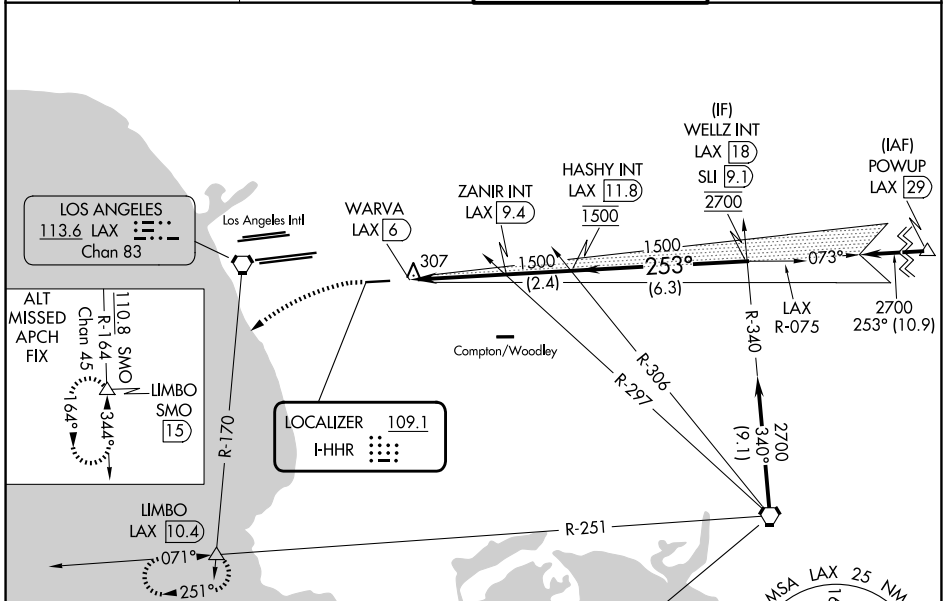
LOC I-HHR	APP CRS	Rwy Ldg	4194
109.1	253°	TDZE	63
		Apt Elev	66

LOC RWY 25

JACK NORTHROP FLD/HAWTHORNE MUNI (HHR)

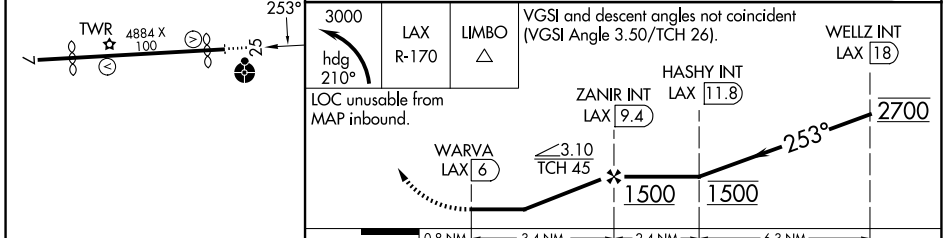
<p>⚠ Inop table does not apply. Rwy 25 helicopter visibility reduction below 1 SM NA. Circling Rwy 7 NA at night. When local altimeter setting not received, use Los Angeles Intl altimeter setting. Simultaneous approach authorized with LAX 25L/R 24L/R. Circling NA north of Rwy 7-25. DME from LAX VORTAC. Simultaneous reception of I-HHR and LAX DME required.</p>	<p>ODALS</p> <p>MISSED APPROACH: Climbing left turn to 3000 on heading 210° and LAX VORTAC R-170 to LIMBO INT/LAX 10.4 DME and hold.</p>
--	--

ATIS 118.4	SOCAL APP CON 124.9 269.0	HAWTHORNE TOWER* 121.1(CTAF) 0 257.8	GND CON 125.1
----------------------	-------------------------------------	--	-------------------------



ELEV 66	D	TDZE 63
---------	----------	---------

<p>LOS ANGELES 113.6 LAX Chan 83</p>	<p>LOCALIZER 109.1 I-HHR</p>	<p>IAF SEAL BEACH 115.7 SLI Chan 104</p> <p>Procedure NA for arrivals at SLI VORTAC on V459-597 southeast bound.</p>
--	----------------------------------	--



MIRL Rwy 7-25	FAF to MAP 3.4 NM							
Knots	60	90	120	150	180			
Min:Sec	3:24	2:16	1:42	1:22	1:08			
CATEGORY	A		B		C		D	
S-25	580-1		517 (600-1)		580-1 $\frac{3}{8}$		517 (600-1 $\frac{3}{8}$)	
CIRCLING	620-1		554 (600-1)		780-2		780-2 $\frac{1}{4}$	
					714 (800-2)		714 (800-2 $\frac{1}{4}$)	

LOC RWY 25

SW-3, 09 JUL 2026 to 06 AUG 2026

SW-3, 09 JUL 2026 to 06 AUG 2026