

VORTAC LAX 113.6 Chan 83	APP CRS 261°	Rwy Ldg TDZE 63 Apt Elev 66	4194
---------------------------------------	------------------------	--------------------------------------	-------------

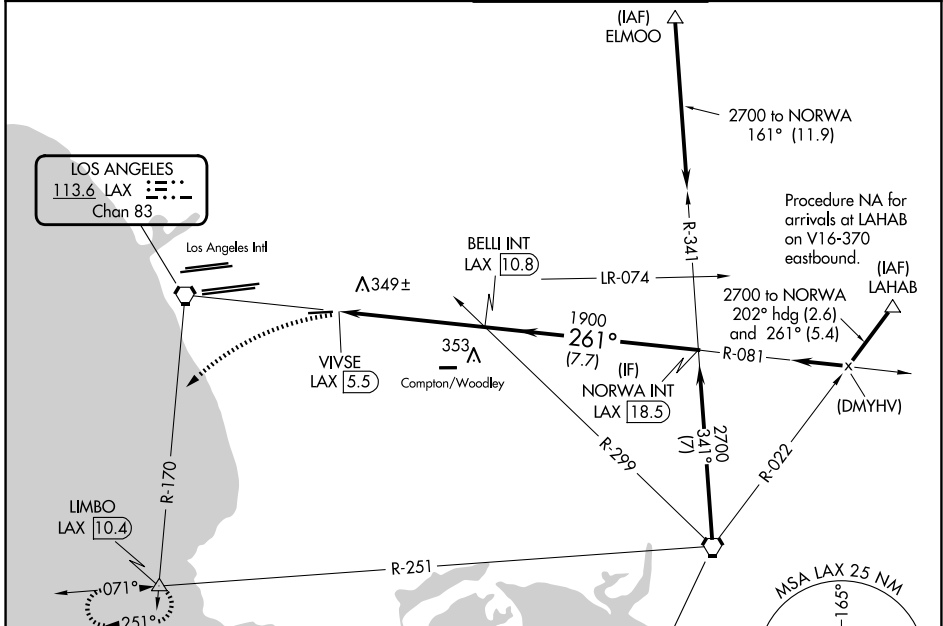
VOR RWY 25

JACK NORTHROP FLD/HAWTHORNE MUNI (HHR)

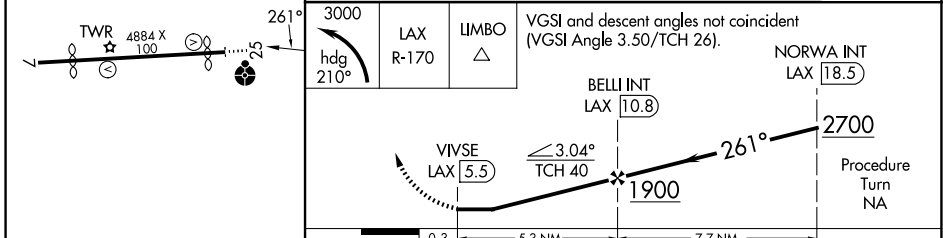
⚠ Circling NA north of Rwy 7-25. Rwy 25 helicopter visibility reduction below 1 SM NA. When local altimeter setting not received, use Los Angeles Intl altimeter setting. Circling Rwy 7 NA at night. Inop table does not apply to S-25 Cats A and B. For inop ALS, increase S-25 Cats C/D visibility to 1/8.

ODALS MISSED APPROACH: Climbing left turn to 3000 via heading 210° and LAX VORTAC R-170 to LIMBO INT/LAX 10.4 DME and hold.

ATIS 118.4	SOCAL APP CON 124.9 269.0	HAWTHORNE TOWER ★ 121.1 (CTAF) 0 257.8	GND CON 125.1
----------------------	-------------------------------------	--	-------------------------



ELEV 66	TDZE 63
---------	---------



	CATEGORY A		CATEGORY B		CATEGORY C		CATEGORY D	
S-25	620-1	557 (600-1)	620-1 ³ / ₈	557 (600-1 ³ / ₈)	780-2	714 (800-2)	780-2 ¹ / ₄	714 (800-2 ¹ / ₄)
CIRCLING	620-1	554 (600-1)						

SW-3, 09 JUL 2026 to 06 AUG 2026

SW-3, 09 JUL 2026 to 06 AUG 2026