

SAN CLEMENTE ISLAND, CALIFORNIA

RNAV (GPS) RWY 24

WAAS CH 87812 W24A	APCH CRS 235°	Rwy ldg TDZE 184 Arprt Elev 184
---------------------------------	-------------------------	---

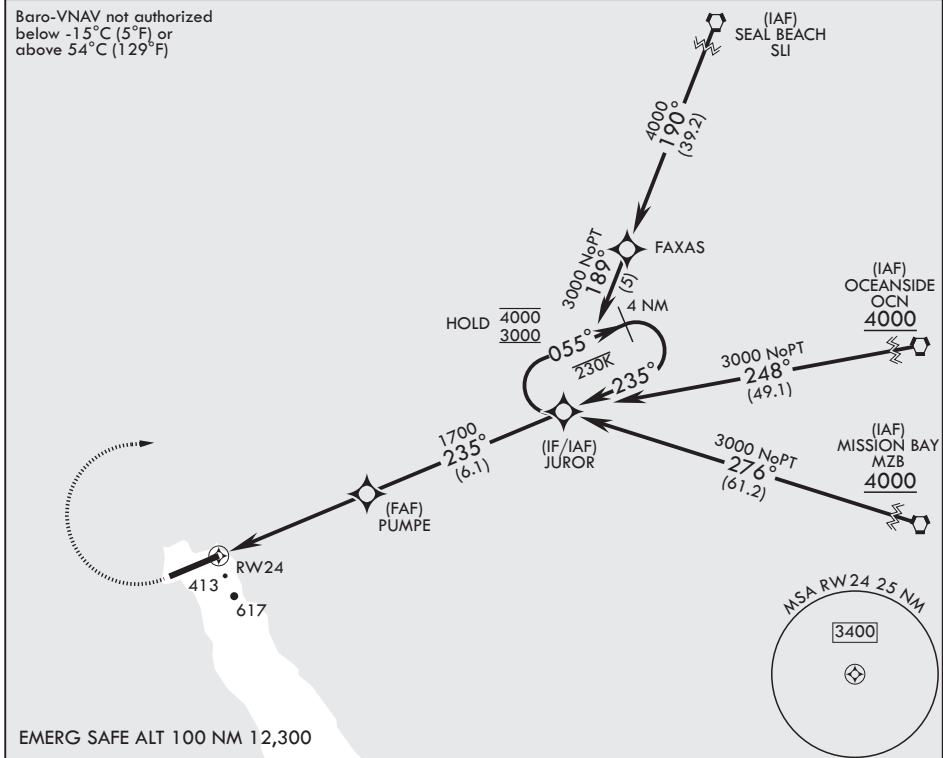
(USN)

SAN CLEMENTE ISLAND NALF (FREDERICK SHERMAN FLD) (KNUC)

RNP APCH-GPS	MISSED APPROACH: Climb to 800, then climbing right turn to 3000 direct JUROR and hold.
--------------	--

ATIS* 268.6	SAN CLEMENTE APP CON 127.05 292.15	TOWER* 126.75 278.8	GND CON 119.55 251.05
-----------------------	--	-------------------------------	---------------------------------

Baro-VNAV not authorized below -15°C (5°F) or above 54°C (129°F)



SW-3, 09 JUL 2026 to 06 AUG 2026

SW-3, 09 JUL 2026 to 06 AUG 2026

EMERG SAFE ALT 100 NM 12,300

800	3000	JUROR	ELEV 184		TDZE 184
crs 235°			JUROR	4 NM Holding Pattern	
			JUROR	055°	4000
				235°	3000
					GP 3.00°
					TCH 50
CATEGORY	A	B	C	D	
LPV DA	384-3/4		200		(200-3/4)
LNAV/VNAV DA	622-1 1/4 438 (500-1 1/4)	645-1 3/8 461 (500-1 3/8)	658-1 3/8 474 (500-1 3/8)	676-1 3/8 492 (500-1 3/8)	
LNAV MDA	700-1	516 (600-1)	700-1 3/8	516 (600-1 3/8)	
CIRCLING*	700-1	516 (600-1)	700-1 1/2 516 (600-1 1/2)	740-2 556 (600-2)	
			HIRL all rwys		
			REIL Rwy 6		
			REIL Rwy 24		

SAN CLEMENTE ISLAND, CALIFORNIA
Amdt 6 16APR26

SAN CLEMENTE ISLAND NALF (FREDERICK SHERMAN FLD) (KNUC)
33°01'N - 118°35'W

RNAV (GPS) RWY 24