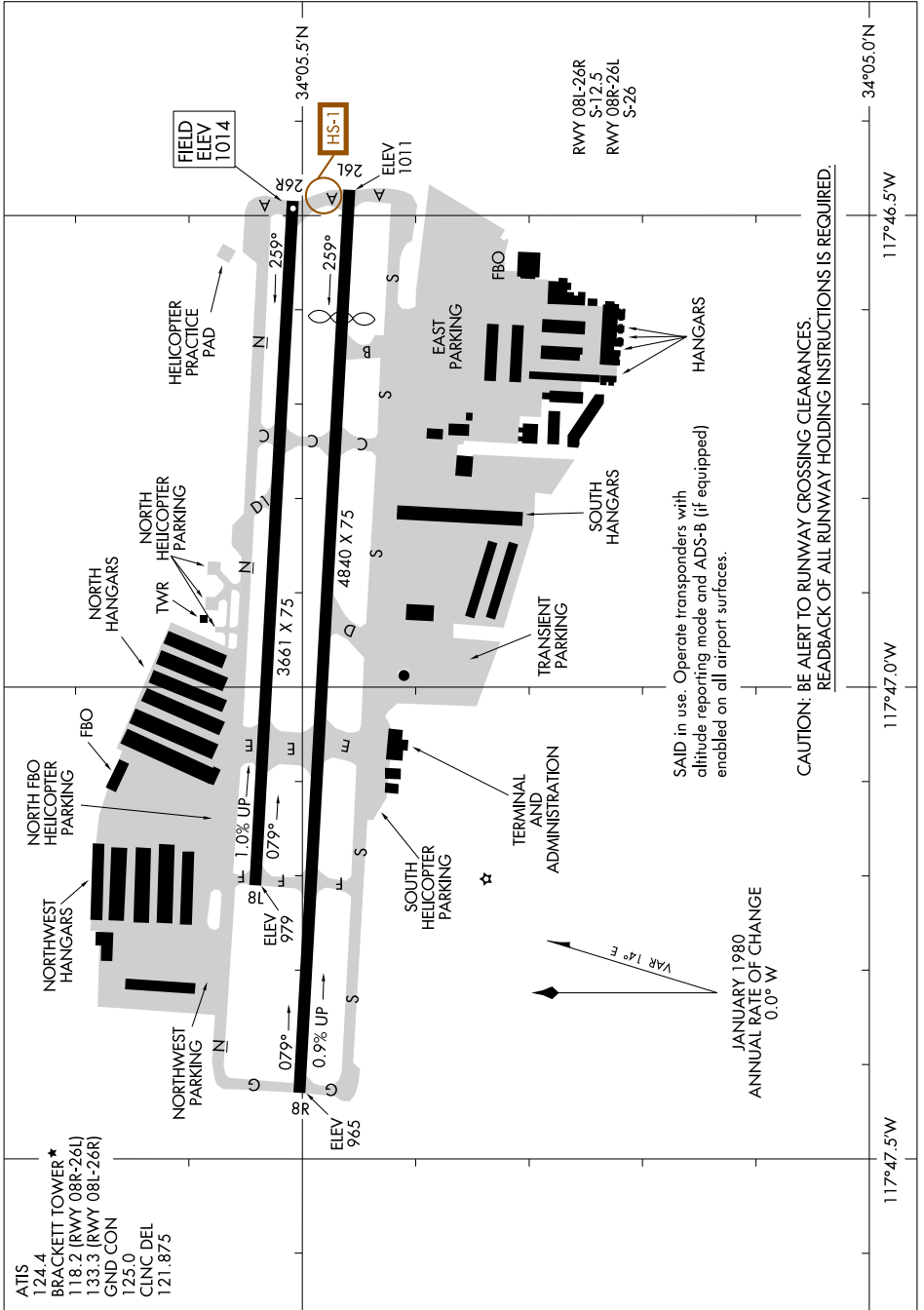


# AIRPORT DIAGRAM

AL-5218 (FAA)

BRACKETT FLD (POC)  
LA VERNE, CALIFORNIA

SW-3, 09 JUL 2026 to 06 AUG 2026



ATIS 124.4  
 BRACKETT TOWER \* 118.2 (RWY 08R-26L)  
 133.3 (RWY 08L-26R)  
 GND CON 125.0  
 CLNC DEL 121.875

SAID in use. Operate transponders with  
 altitude reporting mode and ADS-B (if equipped)  
 enabled on all airport surfaces.

JANUARY 1980  
 ANNUAL RATE OF CHANGE  
 0.0° W

CAUTION: BE ALERT TO RUNWAY CROSSING CLEARANCES  
 READBACK OF ALL RUNWAY HOLDING INSTRUCTIONS IS REQUIRED.

# AIRPORT DIAGRAM

LA VERNE, CALIFORNIA  
BRACKETT FLD (POC)

SW-3, 09 JUL 2026 to 06 AUG 2026