

LOC I-POC 110.5	APP CRS 259°	Rwy Ldg TDZE 4151 1005	Apt Elev 1014
---------------------------	------------------------	--	-------------------------

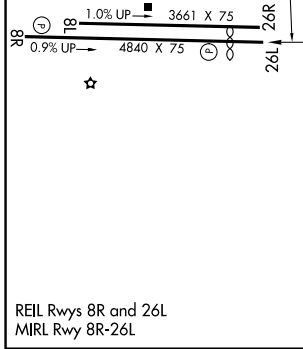
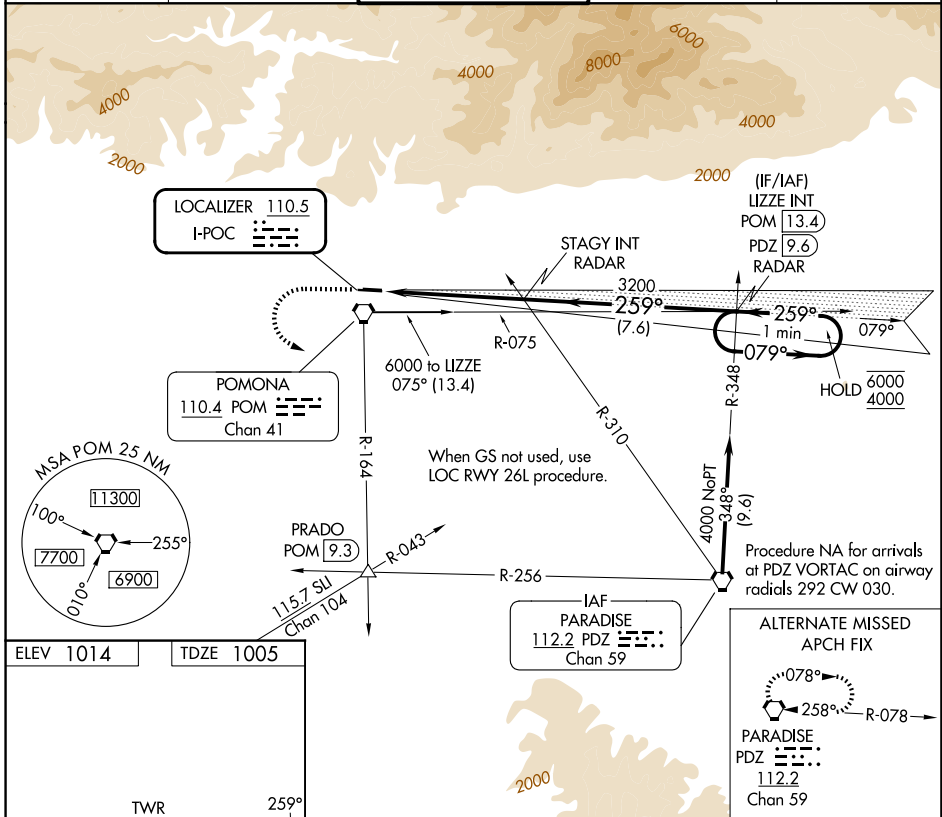
ILS RWY 26L

BRACKETT FLD (POC)

▼ Rwy 26L helicopter visibility reduction below 3/4 SM NA.
▲ When local altimeter setting not received, use Ontario Intl altimeter setting and increase DA to 1364.

MISSED APPROACH: Climb to 2100 then climbing left turn to 4000 on POM VORTAC R-164 to PRADO INT/POM 9.3 DME.

ATIS 124.4	SOCAL APP CON 125.5 349.0	BRACKETT TOWER* 118.2 (CTAF) (8R/26L) 133.3 (8L/26R)	GND CON 125.0	UNICOM 122.95
----------------------	-------------------------------------	--	-------------------------	-------------------------



ELEV 1014	TDZE 1005	2100	4000	PRADO	VGSI and ILS glidepath not coincident (VGSI Angle 3.76/TCH 18).	LIZZE INT PDZ 9.6 RADAR	One Minute Holding Pattern
				<p>*at DTHR; 60 at Rwy end. GS 3.92° *TCH 20</p>			
CATEGORY	A	B	C	D			
S-ILS 26L	1332-1	327 (400-1)			NA		

SW-3, 09 JUL 2026 to 06 AUG 2026

SW-3, 09 JUL 2026 to 06 AUG 2026