

LOC I-POC 110.5	APP CRS 259°	Rwy Ldg TDZE 4151 1005
		Apt Elev 1014

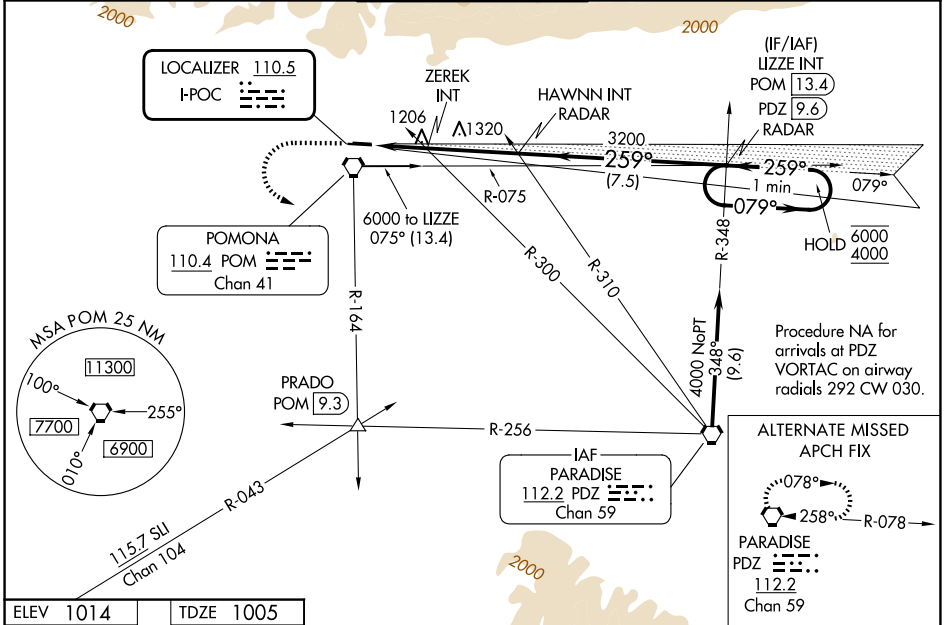
LOC RWY 26L

BRACKETT FLD (POC)

⚠ Circling to Rwy 8L NA at night. Circling NA for Cat C north of Rwy 8L-26R. When Circling to Rwy 8R at night, operational VGSi required, remain on or above VGSi glidepath until threshold. Rwy 26L helicopter visibility reduction below ¾ SM NA. When local altimeter setting not received, use Ontario Intl altimeter setting and increase all MDAs 40 feet.

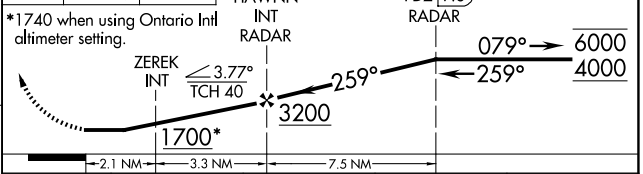
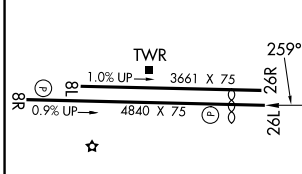
⚠ MISSED APPROACH: Climb to 2100 then climbing left turn to 4000 on POM VORTAC R-164 to PRADO INT/POM 9.3 DME and hold.

ATIS 124.4	SOCAL APP CON 125.5 349.0	BRACKETT TOWER* 118.2 (CTAF)(8R/26L) 133.3 (8L/26R)	GND CON 125.0	UNICOM 122.95
----------------------	-------------------------------------	---	-------------------------	-------------------------



ELEV 1014	TDZE 1005
-----------	-----------

2100 4000 PRADO VGSi and descent angles not coincident (VGSi Angle 3.76/TCH 18). LIZZE INT PDZ [9.6] One Minute Holding Pattern



CATEGORY	A	B	C	D
S-LOC 26L	1700-1 695 (700-1)		1700-2 695 (700-2)	NA
CIRCLING	1700-1 686 (700-1)		1760-2¼ 746 (800-2¼)	NA
ZEREK MINIMUMS (DUAL VOR RECEIVERS REQUIRED)				
S-LOC 26L	1460-1 455 (500-1)		1460-1⅜ 455 (500-1⅜)	NA
CIRCLING	1680-1 666 (700-1)		1760-2¼ 746 (800-2¼)	NA

REIL Rwy 8R and 26L
MIRL Rwy 8R-26L

FAF to MAP 5.4 NM					
Knots	60	90	120	150	180
Min:Sec	5:24	3:36	2:42	2:10	1:48

SW-3, 09 JUL 2026 to 06 AUG 2026

SW-3, 09 JUL 2026 to 06 AUG 2026