


APP CRS <b>245°</b>	Rwy Ldg TDZE Apt Elev	<b>4897</b> <b>326</b> <b>331</b>
------------------------	-----------------------------	---

# RNAV (RNP) Z RWY 24

MC CLELLAN-PALOMAR (CRQ)

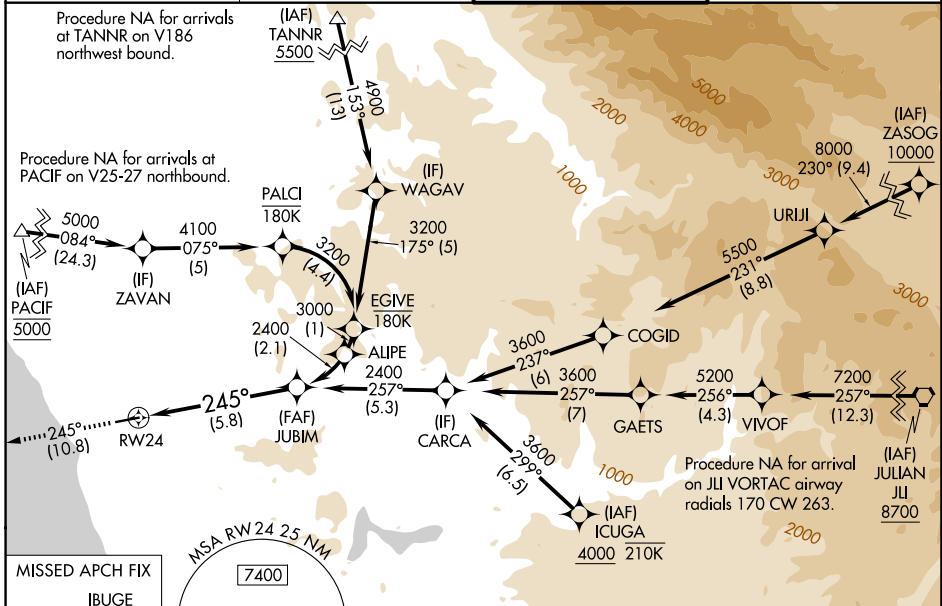
RNP AR APCH - GPS. Authorization required. From PALCI or EGIVE: RF, from CARCA, PALCI, URIJI, or WAGAV: min RNP 0.30. From JLI VORTAC: min RNP 0.60.

For uncompensated Baro-VNAV systems, procedure NA below 5°C or above 54°C. For inop ALS increase RNP 0.10 visibility to RVR 6000 and RNP 0.30 visibility to 1 3/4 SM all Cats.

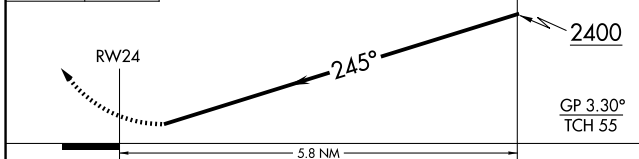
MALSR 

MISSED APPROACH: Climb to 2000 on track 245° to IBUGE and hold.

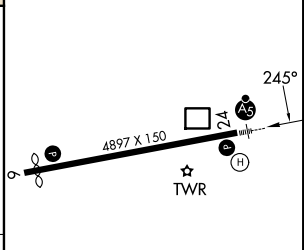
ATIS <b>120.15</b>	SOCAL APP CON <b>127.3 323.0</b>	PALOMAR TOWER* <b>118.6 (CTAF) 0 276.4</b>	GND CON <b>121.8</b>
-----------------------	-------------------------------------	---	-------------------------



IBUGE VGS1 and RNAV glidepath not coincident (VGS1 Angle 3.20/TCH 54). See planview for multiple IF locations.



ELEV 331	<b>D</b> TDZE 326
----------	-------------------



CATEGORY	A	B	C	D
RNP 0.10 DA		745/40	419 (500-3/4)	
RNP 0.30 DA		931-1 3/8	605 (600-1 3/8)	

## AUTHORIZATION REQUIRED

HIRL Rwy 6-24 

SW-3, 09 JUL 2026 to 06 AUG 2026

SW-3, 09 JUL 2026 to 06 AUG 2026