

APP CRS	Rwy Ldg	4600
065°	TDZE	331
	Apt Elev	331

RNAV (RNP) Z RWY 6

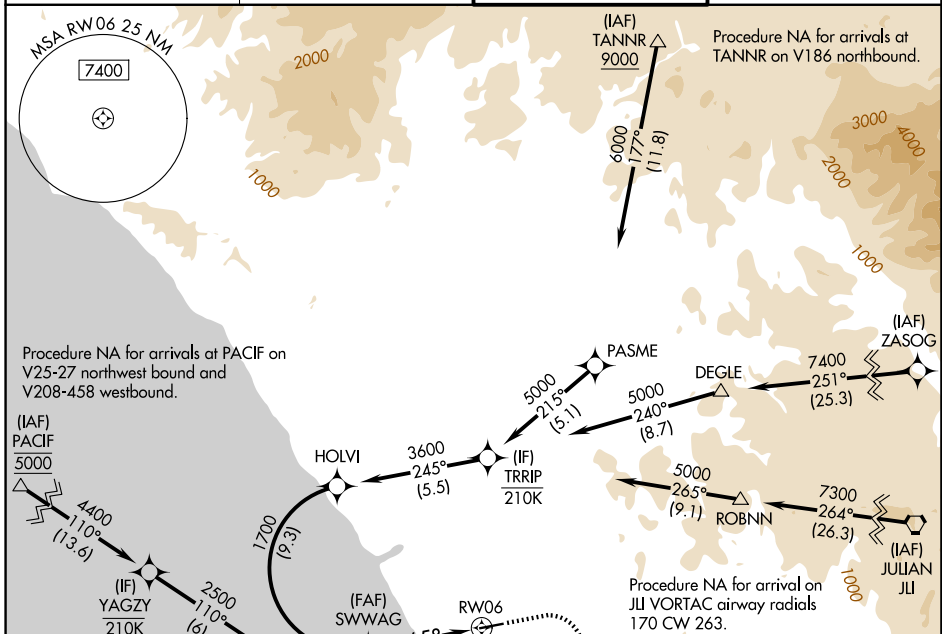
MC CLELLAN-PALOMAR (CRQ)

RNP AR APCH - GPS. Authorization required. From HOLVI: RF

▼ For uncompensated Baro-VNAV systems, procedure NA below 5°C or above 54°C.

MISSED APPROACH: Climb to 750 then climbing right turn to 3000 direct TIZIE and hold, continue climb-in-hold to 3000. *Missed approach requires minimum climb of 280 feet per NM to 1800.

ATIS 120.15	SOCAL APP CON 127.3 323.0	PALOMAR TOWER★ 118.6 (CTAF) 0 276.4	GND CON 121.8
-----------------------	-------------------------------------	---	-------------------------



SW-3, 09 JUL 2026 to 06 AUG 2026

SW-3, 09 JUL 2026 to 06 AUG 2026

ELEV 331	D TDZE 331
----------	-------------------

SWWAG	See planview for multiple IF locations. VGSI and RNAV glidepath not coincident (VGSI Angle 3.00/TCH 35).			750	3000	TIZIE
1700	065°			↑	↷	✧
GP 3.00°	4.1 NM					
TCH 55						
CATEGORY	A	B	C	D		
RNP 0.30 DA*	637-7/8		306 (400-7/8)			
RNP 0.30 DA	750-1 1/8		419 (500-1 1/8)			
AUTHORIZATION REQUIRED						

