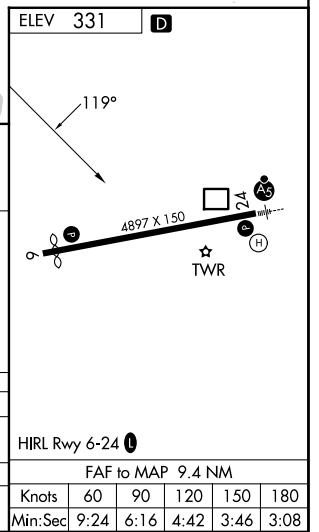
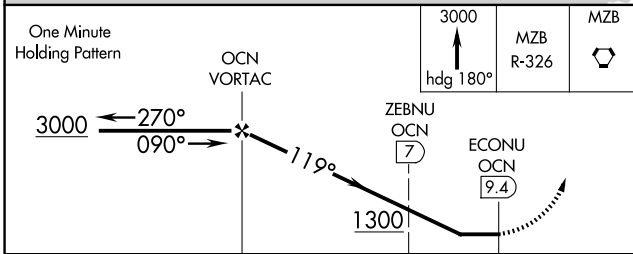
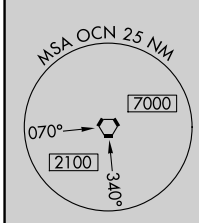
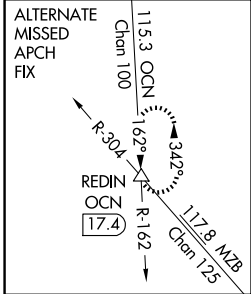
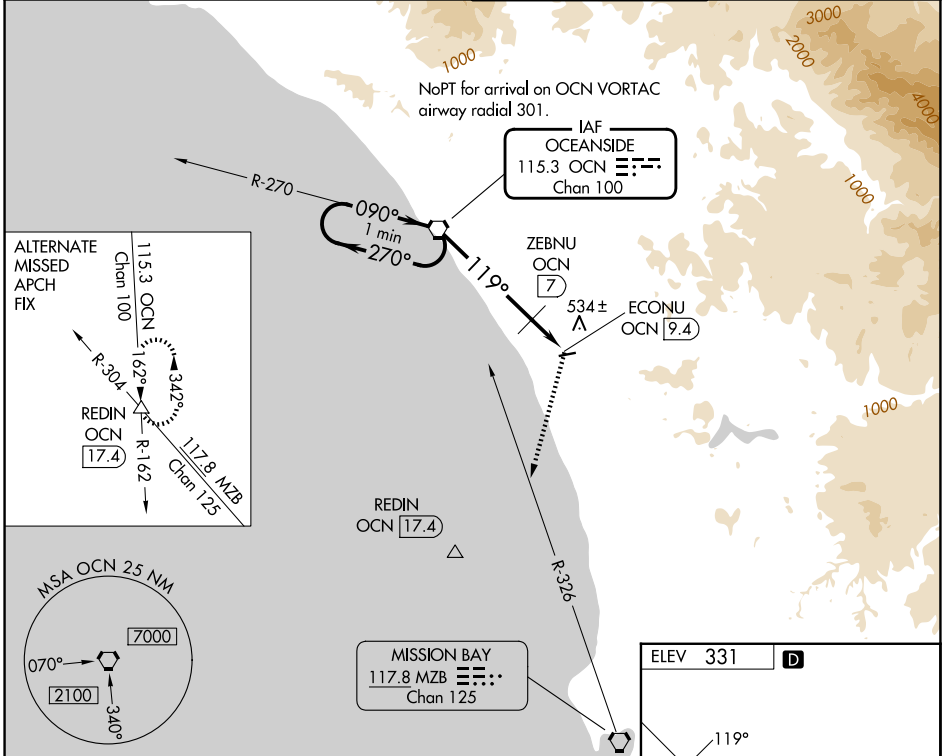


VORTAC OCN <b>115.3</b> Chan <b>100</b>	APP CRS <b>119°</b>	Rwy Ldg TDZE Apt Elev <b>331</b>	<b>N/A</b> <b>N/A</b> <b>331</b>
---	------------------------	---	--

**VOR-A**  
MC CLELLAN-PALOMAR (CRQ)

**MISSED APPROACH:** Climb to 3000 on heading 180° and on MZB R-326 to MZB VORTAC.

ATIS <b>120.15</b>	SOCAL APP CON <b>127.3 323.0</b>	PALOMAR TOWER★ <b>118.6 (CTAF) 0 276.4</b>	GND CON <b>121.8</b>
-----------------------	-------------------------------------	---	-------------------------



CATEGORY	A	B	C	D	
CIRCLING	1300-1¼ 969 (1000-1¼)	1300-1½ 969 (1000-1½)	1300-3 969 (1000-3)	NA	
ZEBNU FIX MINIMUMS					
CIRCLING	920-1 589 (600-1)	1020-1 689 (700-1)	1260-2¾ 929 (1000-2¾)	NA	
FAF to MAP 9.4 NM					
Knots	60	90	120	150	180
Min:Sec	9:24	6:16	4:42	3:46	3:08

SW-3, 09 JUL 2026 to 06 AUG 2026

SW-3, 09 JUL 2026 to 06 AUG 2026