

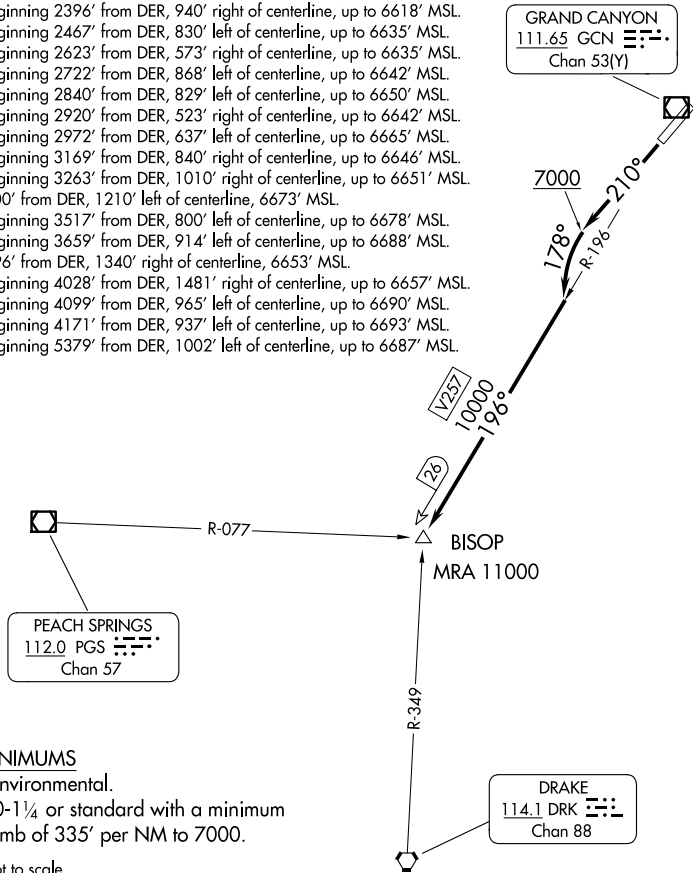
TAKEOFF OBSTACLE NOTES

- Rwy 21: Sign 10' from DER, 330' left of centerline, 5' AGL/ 6536' MSL.
- Tree 282' from DER, 481' right of centerline, 6543' MSL.
- Ground 440' from DER, 615' left of centerline, 6545' MSL.
- Tree 1024' from DER, 711' right of centerline, 6568' MSL.
- Ground 1081' from DER, 768' left of centerline, 6571' MSL.
- Tree 1285' from DER, 835' right of centerline, 6575' MSL.
- Tree 1691' from DER, 917' left of centerline, 6610' MSL.
- Tree 1803' from DER, 929' left of centerline, 6621' MSL.
- Trees beginning 1943' from DER, 835' left of centerline, up to 6632' MSL.
- Tree 1960' from DER, 993' right of centerline, 6601' MSL.
- Tree, pole beginning 2060' from DER, 912' right of centerline, up to 6615' MSL.
- Trees beginning 2144' from DER, 814' left of centerline, up to 6633' MSL.
- Trees beginning 2396' from DER, 940' right of centerline, up to 6618' MSL.
- Trees beginning 2467' from DER, 830' left of centerline, up to 6635' MSL.
- Trees beginning 2623' from DER, 573' right of centerline, up to 6635' MSL.
- Trees beginning 2722' from DER, 868' left of centerline, up to 6642' MSL.
- Trees beginning 2840' from DER, 829' left of centerline, up to 6650' MSL.
- Trees beginning 2920' from DER, 523' right of centerline, up to 6642' MSL.
- Trees beginning 2972' from DER, 637' left of centerline, up to 6665' MSL.
- Trees beginning 3169' from DER, 840' right of centerline, up to 6646' MSL.
- Trees beginning 3263' from DER, 1010' right of centerline, up to 6651' MSL.
- Tree 3500' from DER, 1210' left of centerline, 6673' MSL.
- Trees beginning 3517' from DER, 800' left of centerline, up to 6678' MSL.
- Trees beginning 3659' from DER, 914' left of centerline, up to 6688' MSL.
- Tree 3996' from DER, 1340' right of centerline, 6653' MSL.
- Trees beginning 4028' from DER, 1481' right of centerline, up to 6657' MSL.
- Trees beginning 4099' from DER, 965' left of centerline, up to 6690' MSL.
- Trees beginning 4171' from DER, 937' left of centerline, up to 6693' MSL.
- Trees beginning 5379' from DER, 1002' left of centerline, up to 6687' MSL.

- ATIS 124.3
- GND CON 121.9
- CANYON TOWER\* 119.0
- ALBUQUERQUE CENTER 128.45 298.9
- LOS ANGELES CENTER 124.85 319.2
- UNICOM 122.95

SW-4, 09 JUL 2026 to 06 AUG 2026

SW-4, 09 JUL 2026 to 06 AUG 2026



TAKEOFF MINIMUMS

- Rwy 3: NA-Environmental.
- Rwy 21: 200-1¼ or standard with a minimum climb of 335' per NM to 7000.

NOTE: Chart not to scale.

DEPARTURE ROUTE DESCRIPTION

TAKEOFF RUNWAY 21: Climb heading 210° to 7000, then turn left heading 178° to intercept GCN VOR/DME R-196 to BISOP INT. Expect filed altitude 10 minutes after departure.