

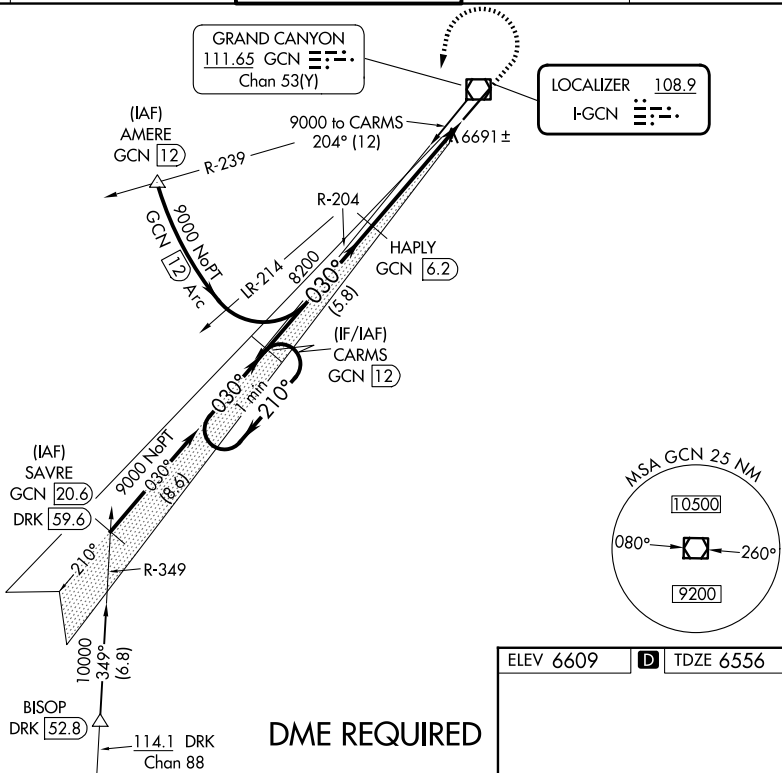
LOC I-GCN 108.9	APP CRS 030°	Rwy Ldg 8999
		TDZE 6556
		Apt Elev 6609

ILS or LOC RWY 3

GRAND CANYON NTL PARK (GCN)

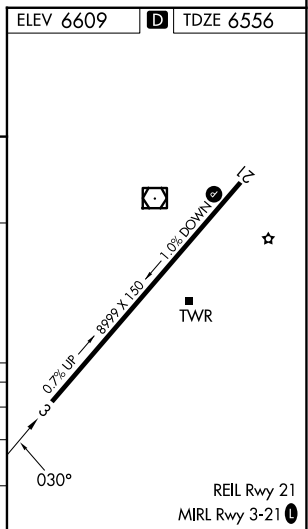
<p>▽ DME from GCN VOR/DME. Simultaneous reception of I-GCN and GCN DME required. DME required.</p>	<p>MISSED APPROACH: Climb to 7000 then climbing left turn to 9000 on heading 180° and on GCN VOR/DME R-204 direct CARMS/GCN 12 DME and hold.</p>
---	--

ATIS 124.3	LOS ANGELES CENTER 124.85 319.2	CANYON TOWER* 119.0 (CTAF) 0	GND CON 121.9	UNICOM 122.95
----------------------	---	--	-------------------------	-------------------------



DME REQUIRED

<p>One Minute Holding Pattern</p> <p>9000 ← 210° / 030° →</p> <p>GS 3.00° TCH 58</p>	CARMS GCN (12)	HAPLY GCN (6.2)	7000	9000	GCN R-204	CARMS GCN (12)
			hdg 180°	* GCN (2.3)	* LOC only.	
CATEGORY	A	B	C	D		
S-ILS 3		6795-¾	239 (200-¾)			
S-LOC 3	6960-1	404 (400-1)	6960-1⅛	404 (400-1⅛)		
CIRCLING	7140-1 531 (600-1)	7200-1 591 (600-1)	7280-2 671 (700-2)	7620-3 1011 (1100-3)		



SW-4, 09 JUL 2026 to 06 AUG 2026

SW-4, 09 JUL 2026 to 06 AUG 2026