

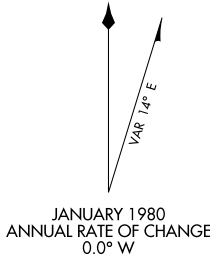
# AIRPORT DIAGRAM

AL-5401 (FAA)

MONTGOMERY-GIBBS EXEC (MYF)  
SAN DIEGO, CALIFORNIA

ATIS  
 126.9  
 MONTGOMERY TOWER ★  
 119.2 269.4 (RWYS 05, 10L/R, 23, 28L)  
 125.7 269.4 (RWY 28R)  
 GND CON  
 118.225  
 CLNC DEL  
 123.725

RWY 05-23  
 PCN 55 F/B/Y/T  
 S-12  
 RWY 10L-28R  
 PCN 35 F/C/Y/T  
 S-12  
 RWY 10R-28L  
 PCN 43 F/C/Y/T  
 S-12



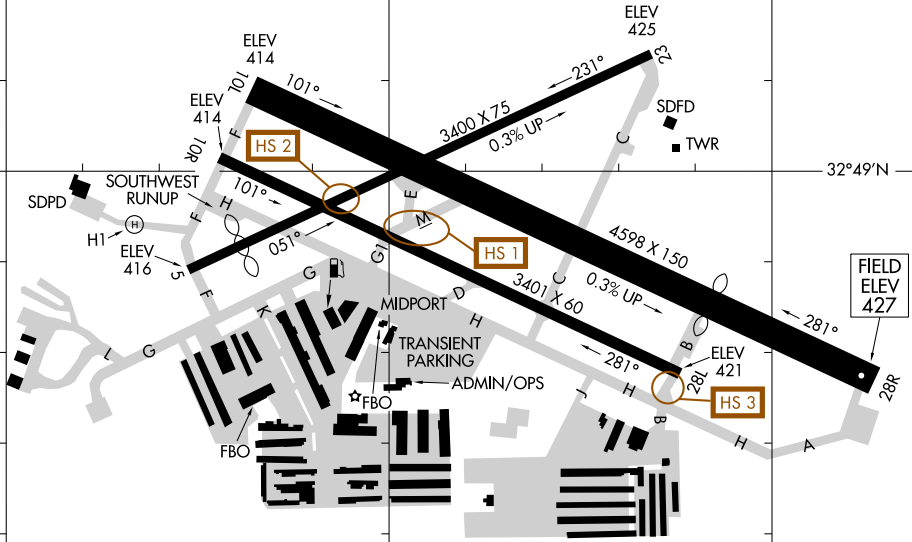
32°49.5'N

32°49'N

32°48.5'N

SW-3, 09 JUL 2026 to 06 AUG 2026

SW-3, 09 JUL 2026 to 06 AUG 2026



SAID in use. Operate transponders with altitude reporting mode and ADS-B (if equipped) enabled on all airport surfaces.

CAUTION: BE ALERT TO RUNWAY CROSSING CLEARANCES.  
READBACK OF ALL RUNWAY HOLDING INSTRUCTIONS IS REQUIRED.

117°09'W

117°08.5'W

117°08'W

# AIRPORT DIAGRAM

MONTGOMERY-GIBBS EXEC (MYF)  
SAN DIEGO, CALIFORNIA