

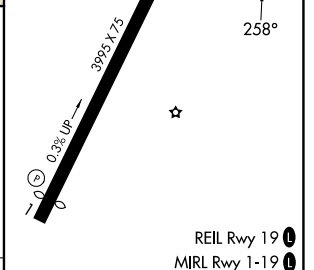
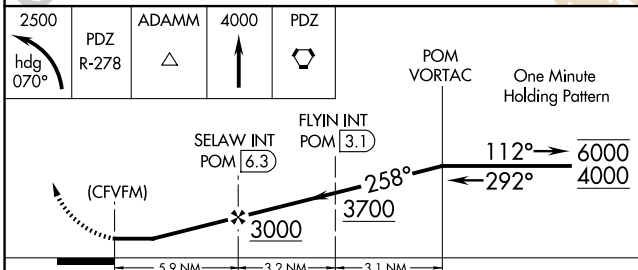
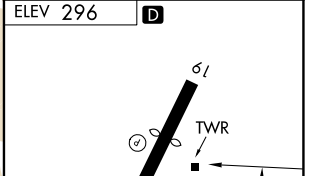
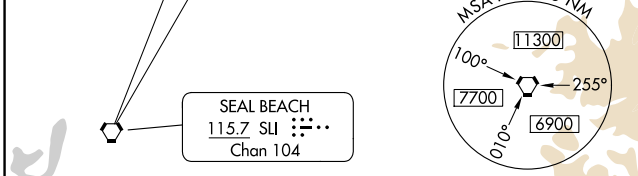
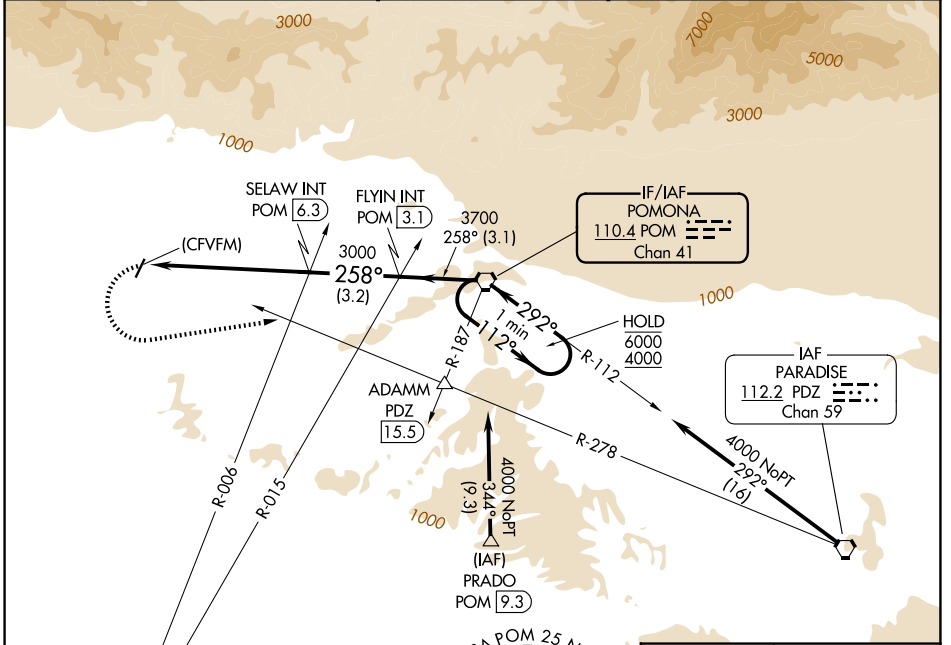
VORTAC POM 110.4 Chan 41	APP CRS 258°	Rwy Ldg TDZE N/A Apt Elev 296
--	------------------------	--

VOR-A
SAN GABRIEL VALLEY (EMT)

⚠ Circling Rwy 1 NA at night. When local altimeter setting not received, use Ontario Int'l altimeter setting and increase all MDA 160 feet.

MISSED APPROACH: Climbing left turn to 2500 on heading 070° and PDZ VORTAC R-278 to ADAMM INT/PDZ 15.5 DME then continue climb to 4000 to PDZ VORTAC.

ATIS 118.75	SOCAL APP CON 125.5 349.0	EL MONTE TOWER * 121.2 (CTAF) 0	GND CON 125.9	UNICOM 122.95
-----------------------	-------------------------------------	---	-------------------------	-------------------------



hdg 070°	PDZ R-278	ADAMM △	4000 ↑	PDZ ⬡	POM VORTAC	One Minute Holding Pattern
5.9 NM		3.2 NM		3.1 NM		
CATEGORY	A	B	C	D	FAF to MAP 5.9 NM	
CIRCLING	1280-1¼ 984 (1000-1¼)	1280-1½ 984 (1000-1½)	1280-3 984 (1000-3)	1320-3 1024 (1100-3)	Knots	60 90 120 150 180
					Min:Sec	5:54 3:56 2:57 2:22 1:58

SW-3, 09 JUL 2026 to 06 AUG 2026

SW-3, 09 JUL 2026 to 06 AUG 2026