

APP CRS	Rwy Ldg	<b>5002</b>
<b>102°</b>	TDZE	<b>73</b>
	Apt Elev	<b>73</b>

# RNAV (GPS) RWY 10

BERMUDA DUNES (UDD)

RNP APCH - GPS.

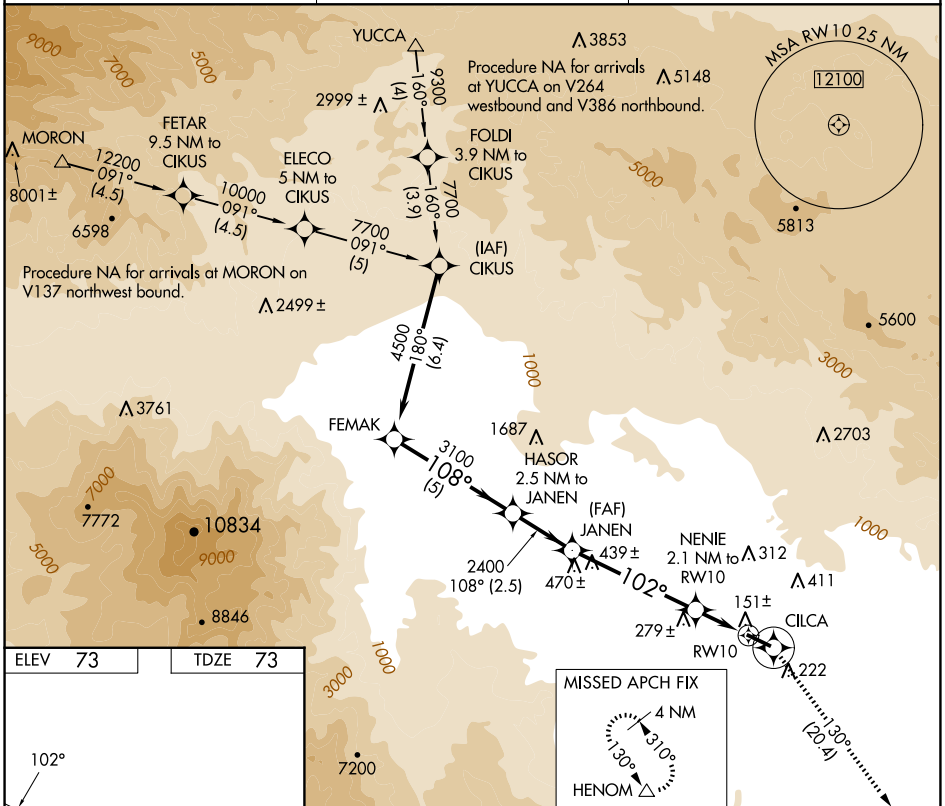
Use Jacqueline Cochran Rgnl altimeter setting.  
 Circling Rwy 28 NA at night.

MISSED APPROACH: Climb to 3700 direct CILCA and via 130° track to HENOM and hold.

TRM ASOS  
**118.325**

SOCAL APP CON \*  
**135.275 251.1**

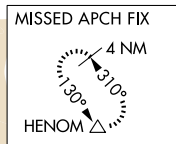
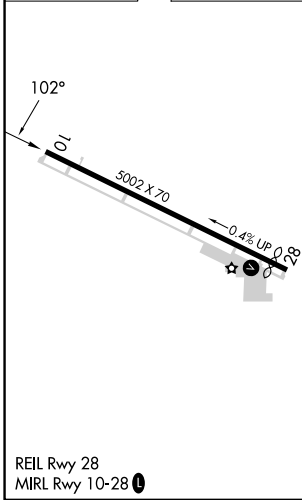
UNICOM  
**122.8 (CTAF) 0**



SW-3, 09 JUL 2026 to 06 AUG 2026

SW-3, 09 JUL 2026 to 06 AUG 2026

ELEV 73	TDZE 73
---------	---------



FEMAK	HASOR 2.5 NM to JANEN	JANEN	3700	CILCA	HENOM
4500	3100	2400	↑	130° Tr	△
Procedure Turn NA	5 NM	2.5 NM	3.08° TCH 40	2.1 NM to RW10	2.1 NM
CATEGORY	A	B	C	D	
LNAV MDA	480-1	407 (500-1)	480-1¼ 407 (500-1¼)	NA	
CIRCLING	700-1	627 (700-1)	1100-3 1027 (1100-3)	NA	