

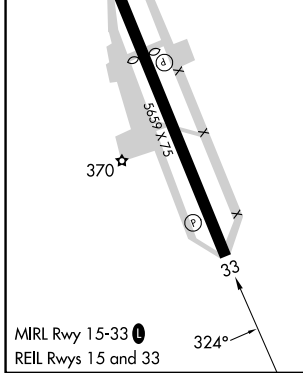
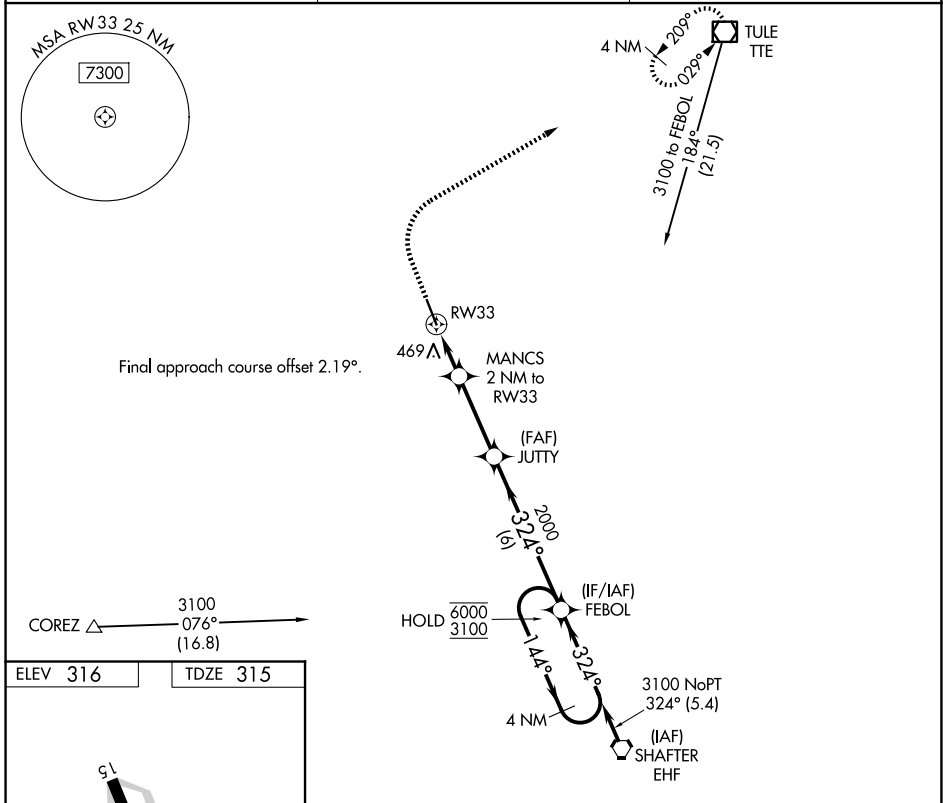
APP CRS	Rwy Ldg	<b>5659</b>
<b>324°</b>	TDZE	<b>315</b>
	Apt Elev	<b>316</b>

# RNAV (GPS) RWY 33

DELANO MUNI (DLO)

RNP APCH - GPS.	MISSED APPROACH: Climb to 800 then climbing right turn to 3100 direct TTE VOR/DME and hold.
<p>▼ Circling NA southwest of Rwy 15-33.</p> <p>▲ When local altimeter setting not received, procedure NA.</p>	

AWOS-3P <b>119.55</b>	BAKERSFIELD APP CON ★ <b>118.9</b>	UNICOM <b>122.8 (CTAF)</b>
--------------------------	---------------------------------------	-------------------------------



800	3100	TTE	VGSi and descent angles not coincident (VGSi Angle 3.00/TCH 26).				
			MANCS 2 NM to RWY 33	JUTTY	FEBOL	4 NM Holding Pattern	
			1.2 NM to RWY 33	0.9 NM	3.1 NM	6 NM	
			1000	2000	3100	6000	
			1.2 NM	0.9 NM	3.1 NM	6 NM	
CATEGORY	A		B		C		D
LNAV MDA	720-1 405 (500-1)		720-1½ 405 (500-1½)				
CIRCLING	760-1 444 (500-1)		780-1 464 (500-1)		820-1½ 504 (600-1½)		960-2 644 (700-2)

SW-3, 09 JUL 2026 to 06 AUG 2026

SW-3, 09 JUL 2026 to 06 AUG 2026