

| | | |
|-------------|----------|-------------|
| APP CRS | Rwy Ldg | 5001 |
| 088° | TDZE | 1389 |
| | Apt Elev | 1395 |

RNAV (GPS) RWY 9

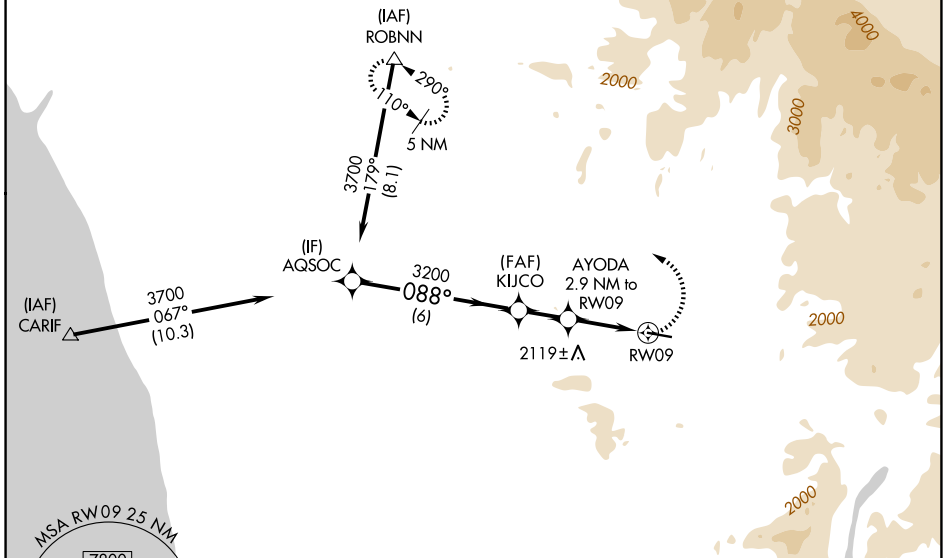
RAMONA (R.NM)

⚠ Circling NA north of Rwy 9-27. Circling NA for Cat C when using Gillespie Fld altimeter setting. DME/DME RNP -0.3 NA. LNAV minima NA when using Gillespie Fld altimeter setting. When local altimeter setting not received, use Gillespie Fld altimeter setting and increase all Circling MDA 180 feet and increase Circling visibility Cat B & ¼ SM. Helicopter visibility reduction below ¾ SM NA.

⚠ MISSED APPROACH: Climbing left turn to 5000 direct ROBNN and hold.

| | | | | |
|------------------------|-------------------------------------|---|--------------------------|-------------------------|
| ATIS 132.025 | SOCAL APP CON 132.2 269.1 | RAMONA TOWER * 119.875 (CTAF) 0 | GND CON 121.65 | UNICOM 122.95 |
|------------------------|-------------------------------------|---|--------------------------|-------------------------|

Procedure NA for arrivals at ROBNN on V186 northbound.



SW-3, 09 JUL 2026 to 06 AUG 2026

SW-3, 09 JUL 2026 to 06 AUG 2026

| | |
|-----------|-----------|
| ELEV 1395 | TDZE 1389 |
|-----------|-----------|

* 2700 when using Gillespie Fld altimeter setting.

| CATEGORY | A | B | C | D |
|----------|-----------------------|-------------------------|-------------------------|----|
| LNAV MDA | 2240-1 851 (900-1) | 2240-1¼ 851 (900-1¼) | 2240-2½ 851 (900-2½) | NA |
| CIRCLING | 2240-1¼ | 845 (900-1¼) | 3180-3 1785 (1800-3) | NA |

REIL Rwy 27 **0**
MIRL Rwy 9-27 **0**