

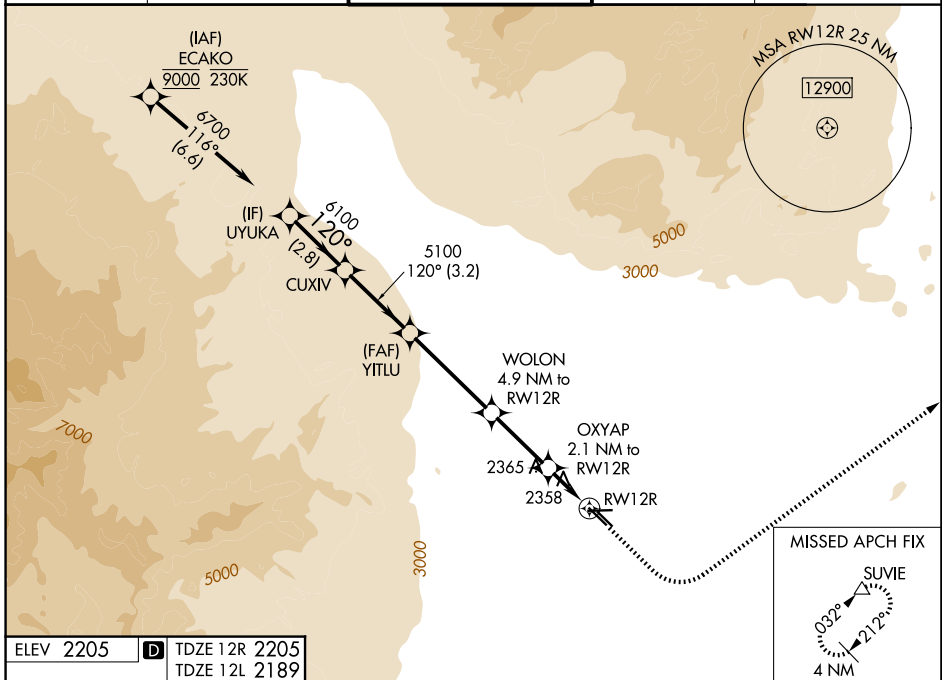
WAAS CH <b>69443</b> <b>W12A</b>	APP CRS <b>120°</b>	Rwy Ldg TDZE Apt Elev	12R <b>5000</b> <b>2205</b> <b>2205</b>	12L <b>4199</b> <b>2189</b> <b>2205</b>
--	------------------------	-----------------------------	--	--

# RNAV (GPS) RWY 12R

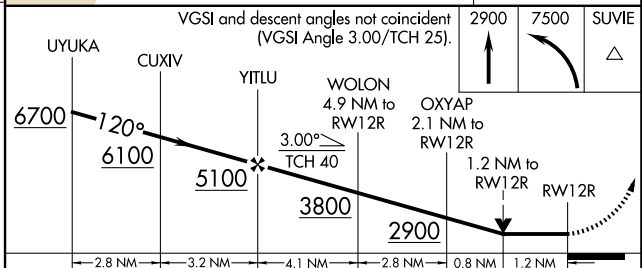
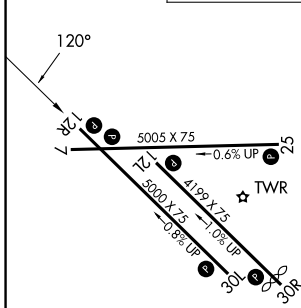
NORTH LAS VEGAS (VGT)

RNP APCH - GPS.		MISSED APPROACH: Climb to 2900 then climbing left turn to 7500 direct SUVIE and hold, continue climb-in-hold to 7500.		
Rwy 12R helicopter visibility reduction below 3/4 SM NA.				

ATIS <b>118.05</b>	LAS VEGAS APP CON <b>119.4 360.85</b>	NORTH LAS VEGAS TOWER* <b>125.7 (CTAF) 360.75</b>	GND CON <b>121.7</b>	UNICOM <b>122.95</b>
-----------------------	--	--	-------------------------	-------------------------



ELEV 2205	<b>D</b>	TDZE 12R 2205 TDZE 12L 2189
-----------	----------	--------------------------------



	A	B	C	D
LP MDA	2620-1	415 (500-1)	2620-1 <sup>1</sup> / <sub>8</sub>	415 (500-1 <sup>1</sup> / <sub>8</sub> )
LNAV MDA	2820-1	615 (700-1)	2820-1 <sup>3</sup> / <sub>4</sub>	615 (700-1 <sup>3</sup> / <sub>4</sub> )
SIDESTEP 12L	2820-1	631 (700-1)	2820-1 <sup>3</sup> / <sub>4</sub> 631 (700-1 <sup>3</sup> / <sub>4</sub> )	2820-2 631 (700-2)
CIRCLING	2820-1	615 (700-1)	2840-1 <sup>3</sup> / <sub>4</sub> 635 (700-1 <sup>3</sup> / <sub>4</sub> )	3540-3 1335 (1400-3)

REIL all rwys **1**  
MIRL all rwys **1**

SW-4, 09 JUL 2026 to 06 AUG 2026

SW-4, 09 JUL 2026 to 06 AUG 2026