

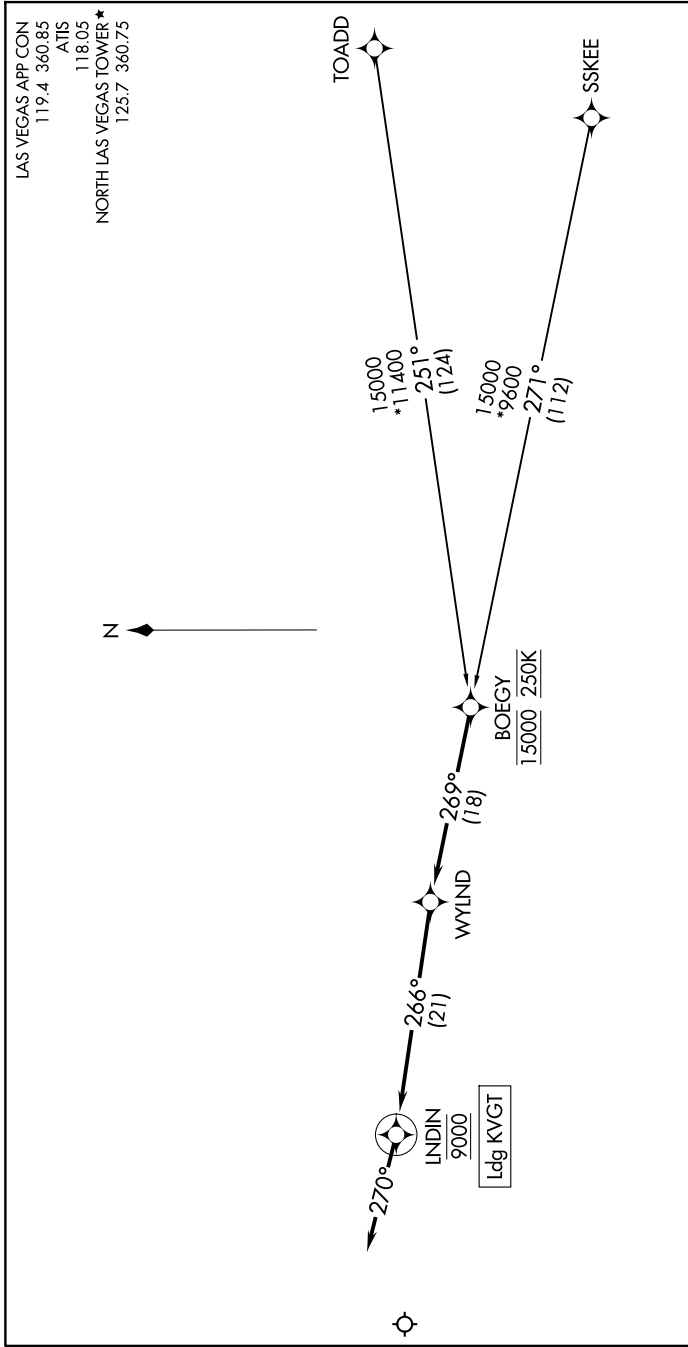
(BOEGY.WYLND1) 21056

WYLND ONE ARRIVAL (RNAV)

AL-6970 (FAA)

NORTH LAS VEGAS (VGT)
LAS VEGAS, NEVADA

SW-4, 09 JUL 2026 to 06 AUG 2026



LAS VEGAS APP CON
119.4 360.85
ATIS
118.05
NORTH LAS VEGAS TOWER *
125.7 360.75

ARRIVAL ROUTE DESCRIPTION

SSKEE TRANSITION (SSKEE.WYLND1)
TOADD TRANSITION (TOADD.WYLND1)

From BOEGY on track 269° to WYLND, then on track 266° to cross LNDIN at 9000, then on track 270°. Expect RADAR vectors to final approach course.

NOTE: RADAR required.
NOTE: RNAV 1.
NOTE: DME/DME/IRU or GPS required.
NOTE: For non-GPS equipped aircraft, BLD, DRK, EED, FLG, GCN, IGM, PGA, PGS, and TBC DMEs must be operational.

NOTE: Chart not to scale.

SW-4, 09 JUL 2026 to 06 AUG 2026

WYLND ONE ARRIVAL (RNAV)

(BOEGY.WYLND1) 25FEB21

LAS VEGAS, NEVADA
NORTH LAS VEGAS (VGT)